

**2011
STAR MAZDA CHAMPIONSHIP
PRESENTED BY GOODYEAR
RULE BOOK**

TABLE OF CONTENTS

PREFACE 1

**TABLE OF CONTENTS LEFT BLANK UNTIL FINAL
VERSION**

© 2011 INDYCAR

Page 1 of 154

**2011
STAR MAZDA CHAMPIONSHIP
PRESENTED BY GOODYEAR
RULE BOOK**

PREFACE

These Rules apply to the 2011 Star Mazda Championship presented by Goodyear. Each Member has been provided with or has been given access to a copy of the Rules, is deemed to have a full awareness and understanding of the Rules, and has agreed to abide by and be personally responsible for compliance with, the Rules. Further information may be obtained by contacting the Star Mazda Championship presented by Goodyear at 10639 Glenoaks Boulevard Unit B, Pacoima, CA 91331, Telephone (818) 686-3350.

Definitions

Terms used in the Rules shall have the following meanings:

ACCUS-FIA - The Automobile Competition Committee of the United States ("ACCUS") is the National Sporting Authority ("ASN") of the Federation Internationale de l'Automobile ("FIA") for the United States. ACCUS is comprised of the seven major motorsports sanctioning/governing organizations (known by or within the FIA as "member clubs"): Grand Am, IMSA, INDYCAR, NASCAR, NHRA, SCCA and USAC. ACCUS is the liaison between the member clubs, other ASNs and the FIA. ACCUS prepares listings on the international calendar, issues international motorsport licenses to U.S. and foreign citizens living in the U.S., issues authorizations for foreign participation, and certifies and maintains U.S. and international records.

Associate - The firm(s), corporation(s) or other business association(s) named on an Associate's membership

application approved by Officials, remaining in good standing, and uniquely identified by a tax identification number. Associate includes Associate and Associate's officers, directors, members, owners, successors, assigns, agents, employees, representatives, and affiliates. Associate includes Manufacturers. Associate is responsible for Associate Participants and Associate guests.

Car - A four-wheel automotive vehicle consisting of the combination of chassis, Engine, transmission, and tires. The vehicle must be supplied by Manufacturers, approved by Officials, and conform to the specifications, spirit, illustrations in, and intent of, the Rules.

Competitor - A Driver, Entrant, crew member, Manufacturer or any other individual or entity who is a Member and participates competitively in an Event.

discretion - Refers to the exercise by Officials of their judgment in making a determination as to the application, construction and interpretation of the Rules.

Driver - The individual named on a Driver's License and membership application approved by INDYCAR and issued by ACCUS-FIA (or another ASN, if applicable) and remaining in good standing. Driver is responsible for Driver guests.

ECU - Engine Control Unit.

Engine - An engine provided by STAR and approved by Officials. All engines must be of the approved specifications and used without modification.

Entrant - The firm(s), corporation(s) or other business association(s) named on an Entrant's License and membership application approved by INDYCAR and issued by ACCUS-FIA, remaining in good standing, and uniquely identified by a Car number. Entrant includes Entrant and Entrant's officers, directors, members, owners, successors, assigns, agents, employees, representatives, and affiliates. Entrant is

responsible for Entrant Participants and Entrant guests.

Entry - An Entrant's Car and Driver combination on an Entry form displaying the Entrant's Car number and approved by Officials for participation in a designated Event.

Event - Any and all STAR organized and/or INDYCAR officially governed Star Mazda Championship presented by Goodyear functions or other approved activities as the context shall require including without limitation promotions, compatibility tests, exhibitions, testing, registration, inspections, practice, qualifications, Race, pre- and post-Race ceremonies and activities and awards and ceremonies. Event does not include any IZOD IndyCar Series, Firestone Indy Lights ® or USF2000 National Championship events, as those events are covered by separate rules.

Event Agreement - The agreement in effect between STAR and an Event Promoter regarding the conduct of a Race Event.

Event Promoter - The firm(s), corporation(s) or other business association(s) named on an Event Agreement with STAR and responsible for designated operations of an Event. Event Promoter includes Event Promoter and Event Promoter's officers, directors, members, owners, successors, assigns, agents, employees, representatives, and affiliates.

EXPERT Class - The additional class of competition within the Star Mazda Championship Presented by Goodyear for which Drivers who have reached 30 years of age before March 1, 2011 automatically qualify. The EXPERT Class utilizes Cars conforming to the specific Star Mazda Championship Presented by Goodyear technical specifications outlined in the Rules. EXPERT Class Drivers will be scored separately in addition to the normal Star Mazda Championship Presented by Goodyear scoring.

Headings - The subject headings are included for purposes of convenience only, and shall not affect the

construction or interpretation of any of the Rules.

INDYCAR - Indy Racing League, LLC d/b/a INDYCAR which owns and operates the IZOD INDYCAR Series and Firestone Indy Lights. "Indy Racing League" and "INDYCAR" are registered trademarks with the United States Patent and Trademark Office and cannot be used without authority from INDYCAR or Brickyard Trademarks, Inc.

License - An authorization approved by INDYCAR and issued by ACCUS-FIA (or another ASN, if applicable) to an individual or other entity to participate in an Event as a Driver, Entrant or Official.

Manufacturer - The firm(s), corporation(s) or other business association(s) named on an Associate's membership application approved by INDYCAR, remaining in good standing, and uniquely identified by a tax identification number. Manufacturer includes the approved chassis, tire, Engine and transmission manufacturers and their officers, directors, members, owners, successors, assigns, agents, employees, representatives, and affiliates. Manufacturer is responsible for Manufacturer Participants and Manufacturer guests.

Member - An individual, firm, corporation or other business association completing an INDYCAR membership application, receiving an acknowledgment of acceptance of such application from INDYCAR, and remaining in good standing. Without limitation, each Competitor and Official must be a Member. Member is responsible for Member's Participants and Member's guests.

Officials - Any and all authorized INDYCAR and STAR officers, employees, agents, representatives, and subcontractors. Officials specifically referenced in the Rules include:

"CEO", Randy Bernard

“Senior Official”, Brian Barnhart

“Appeal Official”, Tony Cotman

“Race Director”, Bill van de Sandt

“Competition Director”, Keith Mellick

The CEO, Senior Official, Appeal Official, Race Director and/or Competition Director may replace any Official with another Official(s) at any time. The above-named Officials may delegate their authority in whole or in part to another Official(s) at any time.

Participant - Any individual or entity along with their officers, directors, members, owners, successors, assigns, agents, employees, representatives, and affiliates that are in any way associated or connected with the Event facility or Event including but not limited to Event facility owners, Event Promoters, municipalities, racing associations, sanctioning/governing organizations, series organizers, Officials, Track workers, volunteers, Entrants, Car owners, Drivers, pit crew members, safety crew members, medical/rescue personnel, sponsors, manufacturers, suppliers, designers, advertisers, inspectors, construction contractors, engineers, architects, insurers, and all individuals in a restricted area.

Penalty Box – The area designated by Officials where Entries serve their penalty.

Race - The feature activity of a Star Mazda Championship presented by Goodyear race weekend.

Racing Surface - The area designated by the Race Director as eligible for use during competition. It may be formed by boundaries such as a wall or a line. It does not include grass or runoff areas.

Registration - The unique identity number assigned to a specific Car by STAR.

Restricted Area - Areas that may only be accessed by

Members, Participants and individuals designated by Officials including but not limited to the pit area, the pit lane, the pit entry, the pit exit and the Racing Surface. Restricted Areas may vary by Event and will be designated by Officials.

Rules - This 2011 Star Mazda Championship presented by Goodyear Rule Book, including all illustrations, supplementary rules, operations manuals, and bulletins issued by Officials, whether containing rules applicable only to a particular Event(s) or containing rules of general applicability. The Rules are made available in both hard copy and electronic format. Because of the ability to alter the electronic format, the hard copy issued by Officials controls as to any discrepancies. Notwithstanding the foregoing, Rules may be issued verbally in mandatory meetings such as drivers meetings held during Events.

Safety Car - The official safety car approved by Officials, driven by an Official and used during on-track activities.

Star Mazda Championship presented by Goodyear - The Star Mazda Championship presented by Goodyear organized by STAR and sanctioned/governed by INDYCAR. Star Race Cars is a registered trademark of Valley Motor Center, Inc., used with permission. Mazda and all trademarks, trade names, service marks, insignias or logos owned by Mazda Motor of America, Inc. or Mazda Motor Corporation are licensed and are used solely by permission of Mazda Motor of America, Inc. Goodyear, Goodyear Tires, trademarks, trade names, service marks, insignias or logos are used solely by permission of the Goodyear Tire and Rubber Company. Any reference in the Rules to Star Mazda Championship Presented by Goodyear may include INDYCAR and/or STAR and/or Officials and any reference to INDYCAR and/or STAR and/or Officials may include a reference to the Star Mazda Championship Presented by Goodyear, if the context so requires.

STAR - Valley Motor Center, Inc d/b/a Star Race Cars and Valley Motor Center Racing, Inc. d/b/a Star Mazda Series

that collectively serves as the organizer of the Star Mazda Championship presented by Goodyear including its officers, employees, agents, representatives, officials and subcontractors.

Start Box – A position designated by Officials where the Entry will initiate a standing start.

Team Championship - The program whereby STAR provides awards and points to Team according to the finishing position of their Drivers. Teams must pay an Entry application and receive an acknowledgement of acceptance of such an application from STAR. Points will accrue from the date of paid Entry by Team into the Team Championship until November 15th of the championship racing season. The Team must start at least one car in not less than eight Races. The Team must remain in good standing with Officials in order to qualify for end of season awards.

Team - One or more Entrants under common ownership and/or control as determined by Officials in their discretion.

Track - The area including without limitation the Racing Surface, pit entrance lanes, pit lane, and pit exit lanes located between the outer and innermost retaining walls.

I. GENERAL

1.1 Governance -

A. General –

(1) These Rules govern the 2011 Star Mazda Championship presented by Goodyear Events and supersede all previous rules, bulletins and supplementary rules and regulations, except as otherwise indicated.

(2) Each Member is personally responsible for the Member's compliance with the Rules.

(3) Officials may penalize any Member and/or exclude any Member or equipment from any Event if Officials deem any act or any condition to be hazardous and/or not meeting the specifications, spirit, illustrations, and intent of, the Rules. Conditions that may warrant penalty and/or exclusion include without limitation any action which an Official deems to be a threat to the integrity of INDYCAR, Star Mazda Championship presented by Goodyear and/or orderly conduct of the Event and/or which relates to the design and construction of a Car or repairs to a damaged Car.

(4) If the Rules do not expressly permit a variation, then the Member shall presume that such variation is not permitted. If a Member is uncertain if an act, part, etc. violates a Rule, the burden is on the Member to receive pre-approval in writing from Officials. If not, the Member assumes the risk of

noncompliance. Failure to gain an advantage by a Rule violation may not reduce or negate a penalty.

B. Officials Authority –

(1) The Rules shall be applied, construed and interpreted by Officials, and the Official's application, construction and interpretation shall be final and binding.

(2) Officials reserve the right to revise the Rules at any time, including without limitation during an Event. Notices, bulletins, supplementary rules, regulations and penalties are effective on the date and time issued, regardless of the date and time when a Member receives actual notice.

(3) Officials shall have the right to authorize and supervise Events of any kind; to make and construe Rules and to render decisions concerning them; to grant, approve, refuse or withdraw Licenses, memberships, and sanctions; to assign and cancel dates for Events; to appoint and rescind the appointment of Officials; to impose and remove penalties for any violation of the Rules; to establish standards of eligibility for participation in Events; to establish Rules for its own procedure; and to do any and all things which, in its judgment, are consistent with the enhancement of the Events. Any and all actions and decisions which Officials are authorized and empowered to take under the Rules may be taken, or not taken, by Officials in their discretion.

(4) Officials also reserve the right to take whatever action and/or impose whatever penalty they deem necessary to maintain the integrity of INDYCAR, Star Mazda Championship presented by Goodyear and/or its Events.

C. Officiating -

(1) STAR and/or INDYCAR will select Officials as it deems appropriate.

(2) Officials shall have the discretion and authority to take any and all actions and make any and all determinations they deem necessary or appropriate during, or in connection with, an Event, including without limitation determinations as to whether a Rule violation has occurred and whether a penalty should be imposed.

(3) Officials in their discretion shall have the right to determine whether or not to publish or cause to be published a notice stating that the Officials have penalized any Member and/or rendered a judgment on a protest or appeal. If published, the notice may include without limitation a description of the penalty or judgment and names of the affected Members. Having accepted the privileges and obligations of membership, the Members referenced in any such notice waive any and all rights of action against INDYCAR and/or STAR and/or against any individual publishing such notice. Officials may publicize the results referenced in such notice in the posting and awards or otherwise.

(4) Officials will secure necessary timing and scoring and technical equipment and record all timing and scoring and technical information, including the standings of an Event; control the designated timing and scoring and technical areas; provide competition information to the Competitors, the Event Promoter, and the press; and facilitate the award distributions. Officials shall be the final authority on the content of the official posting of all Entry lists, practice sessions, qualifications results, Race finishes, point standings and award distributions.

(5) Officials may order the completion, postponement or cancellation of an Event or any portion thereof in the case of inclement weather, physical condition of the Track, or for any other reason. Officials may terminate a Race before its scheduled number of laps or allotted time and in such case determine the Race results and disposition of the awards, and may terminate a Race after one or more Cars have finished. Officials may reduce the scheduled number of laps, allotted time, or they may declare an Event completed, postponed or abandoned.

(6) As soon as practical after the conclusion of an Event, Officials shall prepare a report giving the results of the Event and may identify protests lodged and any discipline administered. Officials shall keep a record of Cars declared out of the Race and the reason thereof.

D. Acceptance of the Rules -

(1) Every Member who is involved in and/or participates in any way in any Event shall be deemed to have a full awareness and understanding of, and to accept, the Rules.

(2) Every Member agrees to follow the direction of Officials with respect to the enforcement of these Rules or be subjected to penalties for failure to comply with such directions.

E. Assumption of Risk, Liability Release, Acknowledgment and Indemnity -

(1) ASSUMPTION OF RISK - EVERY MEMBER AGREES TO BE BOUND BY THE RULES AND ASSUMES ALL OF THE RISK OF SUCH MEMBER'S INVOLVEMENT AND/OR

PARTICIPATION IN AN EVENT.

(2) LIABILITY RELEASE - RECOGNIZING THAT AUTOMOBILE RACING CAN BE A HAZARDOUS UNDERTAKING, MEMBERS, FOR THEMSELVES, THEIR HEIRS, EXECUTORS, REPRESENTATIVES, SUCCESSORS AND ASSIGNS, AGREE, BY THEIR MEMBERSHIP, THAT THEY RELEASE AND DISCHARGE INDYCAR AND STAR, THE OFFICERS, DIRECTORS, EMPLOYEES, AGENTS, AFFILIATES, REPRESENTATIVES, OWNERS, SUCCESSORS AND ASSIGNS OF INDYCAR AND STAR, AND OTHER MEMBERS, FROM ANY AND ALL LIABILITY FOR DAMAGES TO PROPERTY, PERSONAL INJURY, AND/OR DEATH, IN ANY WAY RELATING TO ANY EVENT OR THE MEMBERS' INVOLVEMENT AND/OR PARTICIPATION IN THE EVENT, REGARDLESS OF HOW THE CLAIM MIGHT ARISE INCLUDING WITHOUT LIMITATION RACE OFFICIATING, RULE INTERPRETATION AND VIOLATIONS, PHYSICAL CONDITION OF THE TRACK, AND/OR EMERGENCY TREATMENT OR RESCUE.

(3) ACKNOWLEDGMENT -

(a) MEMBERS RECOGNIZE THIS RELEASE APPLIES EVEN IF THE RELEASED PARTIES OR ANY OF THEM ACTED NEGLIGENTLY AND UNDERSTAND THAT MEMBERS MAY BE ASKED TO ACKNOWLEDGE THIS ASSUMPTION OF RISK AND RELEASE BY OTHER AGREEMENTS THEY MIGHT SIGN AS A PREREQUISITE TO

**PARTICIPATE IN AN EVENT OR
EVENTS.**

**(b) EACH MEMBER ACKNOWLEDGES
THAT THE MEMBER HAS MADE THE
MEMBER'S SPOUSE AND/OR
DEPENDENTS AWARE OF THE
MEMBER'S DECISION TO ASSUME AND
INCUR THE RISK ASSOCIATED WITH
RACING WITHOUT THE RIGHT TO
PURSUE CLAIMS OF WRONGDOING.**

**(4) INDEMNITY - EACH MEMBER
ACKNOWLEDGES THAT MEMBER IS
RESPONSIBLE FOR VIOLATION OF
MEMBER'S AGREEMENTS BY MEMBER,
MEMBER'S REPRESENTATIVES INCLUDING
LOVED ONES AFFECTED BY MEMBER'S
PARTICIPATION, AND MEMBER'S
PARTICIPANTS AND GUESTS. THIS
RESPONSIBILITY APPLIES TO ALL
VIOLATIONS OF MEMBER'S
AGREEMENTS WITH INDYCAR AND/OR
STAR. THIS INCLUDES THE MISUSE OF
CREDENTIALS AND THE FAILURE TO
ACCEPT THE ASSUMPTION OF RISK, THE
WAIVER AND RELEASE OF LIABILITY, THE
BINDING NATURE OF THE RULES,
INDYCAR'S AND/OR STAR'S INTREPRETION
OF THE RULES, AND THE FINALITY OF THE
APPEAL PROCEDURE. MEMBER
UNDERSTANDS THAT THIS
RESPONSIBILITY INCLUDES THE DUTY TO
INDEMNIFY AND HOLD INDYCAR AND/OR
STAR HARMLESS FROM THE
CONSEQUENCES AND DAMAGES ARISING
FROM THE VIOLATION.**

1.2 Safety -

A. Safety Policy - While Officials seek to maintain safe conditions for Competitors taking into account all aspects of the Event, Members recognize that conditions may not be safe, and can be affected by human error. All Members acknowledge and agree that racing is a hazardous activity and their participation is with expressed assumption of this risk.

B. Safety -

(1) While acknowledging the inherent risk of racing to Competitors and other Members participating in an Event, Members are personally responsible for the safety of their racing equipment and their own safety. No Event Promoter, INDYCAR, STAR or any Manufacturer is responsible for the adequacy of a Member's racing equipment or racing activity to accomplish this purpose. No Event Promoter, INDYCAR, STAR or any Manufacturer makes any representation, warranty or covenant that safety equipment and/or personnel will prevent or reduce the Member's risk or extent of injury in an Event.

(2) Officials may take any action, including canceling, postponing, temporarily stopping or delaying an Event, if Officials determine in their discretion that safety requires such action. Officials may order off the Track any Member or Car that Officials determine constitutes a hazard. Officials may prohibit any Member or Member's equipment from entering or continuing in an Event if Officials consider the Member or Member's equipment to be reckless, hazardous or acting without due consideration to others. None of such decisions during an Event may be protested or appealed. In the event a Driver is ordered off the Track due solely to driving, the Entrant may replace the Driver with a qualified Driver approved by Officials and continue

in the Event pursuant to Rule 5.1(B)(2).

C. Security -

(1) Only authorized personnel are permitted on the Track and other locations designated by Officials including without limitation spotter stands, corner worker stations, safety truck locations, photographer locations and broadcast platforms.

(2) Officials and the Event Promoter have the right to engage in such searches of individuals and property at any Event facility as they deem necessary or appropriate for security of the Event. If they deem necessary, Officials and the Event Promoter have the right to remove any individual and/or property from the Event facility.

(3) Officials may penalize any Entrant, Associate or other Member whose representative or equipment enters a Restricted Area at an Event facility prior to the scheduled opening time or remains in a restricted area at an Event facility after the scheduled closing time without prior approval from Officials and the Event Promoter.

(4) Only Members possessing a valid driver's license may operate a motorized vehicle in a restricted area during an Event. Only vehicles approved by Officials are permitted in the pit area. Officials and/or an Event Promoter may have additional or different requirements for a particular Event, and Officials may modify the foregoing Rule accordingly.

(5) Members must not operate or permit another individual to operate a motorized or non-motorized vehicle at the Event facility recklessly or without due consideration to Members, spectators or others.

(6) Smoking is not permitted on the Track, in the pit

area, or in any fuel service area. Officials and/or an Event Promoter may have additional or different requirements for a particular Event, and Officials may modify the foregoing Rule accordingly.

D. Medical/Rescue Requirements and Injury Reports

(1) Officials may require the Event Promoter to use, in compliance with local regulations and/or ASN requirements, medical/rescue personnel and equipment acceptable to Officials to provide Members with assessment and treatment of emergency medical conditions including breathing difficulty, spinal injury, cardiopulmonary arrest, and external bleeding.

(2) A Driver may be required to demonstrate ability to exit a Car to Officials' satisfaction.

(3) A Driver involved in a crash or injured in another incident during an Event must report as directed by Officials and may not continue in the Event nor participate in future Events without clearance from Officials.

(4) Any other Member involved in a crash or injured in another incident during an Event must report to the medical center or as directed by Officials before departing the Event facility prior to the conclusion of an Event.

E. Biomedical Research and Device Test Policy – All Members must comply with INDYCAR's Biomedical Research and Device Testing Policy available from the INDYCAR office.

F. Data Sharing Policy - All Members agree:

(1) INDYCAR and STAR own all data collected by or on behalf of Star Mazda Championship presented by Goodyear including without limitation all data from in-car cameras.

(2) INDYCAR and STAR may disclose the data to third parties for any reasonable purpose including without limitation safety and/or medical research.

(3) If an individual desires to receive any such data, the individual shall submit such request in writing to the Senior Official.

(a) The written request shall specify the data requested and the proposed use of the data.

(b) The decision whether to provide the data shall be in the discretion of INDCAR and/or STAR taking into account such factors as the nature of the data requested, the uses for which the individual requests the data and whether or not consent and/or approval of any other individual is required or appropriate in order to release the data.

(c) The individual will be required to execute an agreement regarding approved uses for the data and the confidential treatment of any data that INDYCAR and/or STAR approves for use by the individual.

G. Safety Inspections - Officials may inspect all equipment prior to each Event and re-inspect equipment at any time. An Entrant may be required to replace seats, seatbelts, helmets, headrests, head restraint systems, and other equipment at any time.

H. Personal Safety Equipment -

(1) Drivers

(a) All Drivers must wear:

- (i)** Fire resistant one piece uniform conforming to SFI 3.2A/5 or FIA 8856-2000 specification;
- (ii)** Fire resistant socks;
- (iii)** Fire resistant shoes;
- (iv)** Fire resistant gloves;
- (v)** Nomex long sleeve underwear; and
- (vi)** Fire resistant head sock.

(b) All removable dental appliances, chewing gum, rings, watches and other jewelry and comparable items must be removed before a Driver participates in an on Track Event.

(c) Helmets

- (iii)** All Drivers must wear safety helmets designed specifically for automobile racing that meet or exceed the 2005 Snell Foundation specifications SA or SFI 31.1 certifications and are labeled as such. Helmets must be spherical in shape and be fitted with a face shield that has a positive latching mechanism approved by Officials designed to keep the shield down in the event of a crash. Aerodynamic devices must not protrude more than 0.250 inches from the surface. Flat back designs are not permitted. Helmets must be fitted with the approved helmet removal system.
 - (ii)** All helmets must be inspected and approved by Officials before use and are

subject to confiscation and re-inspection by Officials at any time. Officials shall affix stickers to the helmets signifying approval for use. At any time, Officials may remove the approval stickers and require the helmets to be re-inspected and refurbished by an SFI certified helmet manufacturer before Officials will consider them for re-approval. The helmet manufacturer must submit to Officials documentation stating the refurbished helmet is approved by SFI for use in competition.

(d) Head Restraint Systems

- (i) STAR requires the use of head restraint systems. Head restraint systems must meet or exceed SFI 38.1 certifications and be inspected by Officials.
- (ii) Officials shall issue a serial number to each head restraint system. At any time, Officials may require the head restraint system to be re-inspected and refurbished by the SFI certified head restraint system manufacturer before Officials will consider them for re-approval. The head

restraint system
manufacturer must submit to
Officials documentation
stating that the head restraint
system is approved by SFI
for use in competition.

2. Crew Members, Other Competitors and Officials –

(a) All Competitors and Officials in the pit area must adhere to the following dress code:

- (i) Long pants;
- (ii) Closed-toe shoes; and
- (iii) Shirts with sleeves (no tank tops).

(b) This Rule does not apply to individuals in the pit area who are not Competitors or Officials or to any individuals in the garage area or non-restricted areas. Officials and/or an Event Promoter may have additional or different requirements for a particular Event.

1.3 Emblem Display on Uniforms, Cars and Other Equipment - All Members agree to comply with the 2011 INDYCAR Style Guide available from STAR at STAR's offices.

1.4 Advertising -

A. Officials in their discretion may regulate the advertising of any product on equipment, apparel or otherwise in connection with a Member, INDYCAR, Star Mazda Championship presented by Goodyear or an Event.

B. Advertising may not be displayed until it has been approved by Officials. Officials in their discretion may disapprove advertising for any reason, including but not

limited to advertising which they determine is offensive, inappropriate, illegal, undignified, in conflict with any INDYCAR, Event Promoter and/or Star Mazda Championship Presented by Goodyear sponsorship, potentially confusing or may detract from the interest in an Event and/or the integrity of INDYCAR and/or Star Mazda Championship presented by Goodyear.

C. Officials may require a Member to agree in writing with a policy statement regarding advertising of a product.

1.5 Product Use - A Member shall not make a false public statement concerning any product used or said to have been used in an Event. An Entrant may be required to provide Officials with an affidavit certifying product use. Display of an emblem on a Car or uniform does not constitute a statement concerning use.

1.6 Event Personnel and Operations -

A. General -

- (1) An Entrant is not permitted to utilize a signboard.
- (2) At all Oval Events, one spotter is required per Entry. They must be in the designated location(s) and have a radio capable of communicating with the Driver and an individual in the Entrant's pit.
- (3) An Entrant is not guaranteed a practice session or a minimum amount of green condition time during a practice session. Practice sessions may include all Cars or be divided into groups.

B. Meetings and Activities -

- (1) Officials may schedule mandatory meetings and/or activities for Members. Officials may require a meeting with Member(s) at any time. Each

Member must attend all official meetings and other activities designated by Officials as mandatory for that Member at the times and locations designated by Officials. These may include the following:

(a) Driver and Chief Mechanic Meetings -

- (i)** Officials may conduct one or more meetings of Drivers and chief mechanics to discuss general application, construction and interpretation of the Rules and any specific Rules applying to a particular Event.
- (ii)** While the meetings are open to all Competitors, all Drivers and chief mechanics participating in the Event must attend. A Driver shall be deemed late if he/she is not present during roll call.
- (iii)** Penalties for late attendance or missing the meeting:

(1) Before Qualifying - 5 minutes in the Penalty Box applied to the qualifying session.

(2) After Qualifying and before the race - one starting grid position.

(b) Chief Mechanic Meetings -

- (i)** Officials may conduct one or more meetings of chief mechanics and other Entrant representatives to discuss general application, construction and interpretation of the operational, logistical or technical Rules and any

specific Rules applying to a particular Event. Late is defined as not being present for roll call.

(ii) Penalties for late attendance or missing the meeting will be a monetary fine of \$250.00 payable to STAR prior to Qualifying.

(c) **Driver Autograph Sessions** - Officials may conduct one or more autograph sessions of Drivers during each Event.

(d) **Driver Introductions** - Officials may conduct one or more Driver introductions during each Race weekend.

(e) **Event media and marketing activities** - The Driver shall attend and participate in media and marketing activities during an Event which include but are not limited to:

(i) Practice: The fastest Driver of the day shall make post-practice media center appearance for interview and/or photographs

(ii) Qualifications: The Driver qualifying on the Pole for the Event shall make an appearance at the Pole qualifying media “bullpen” for interview and/or photographs; The Pole winner and the outside front row starter shall make an appearance at the media center immediately following qualifications for interview and/or photographs.; The Pole winner shall comply to photograph obligations.

- (iii) Pre-Race: In preparation for a Race, Drivers shall follow the instructions of Officials. Unless otherwise directed, the Drivers shall proceed to the Pre-Race stage and fully participate in pre-Race ceremonies including without limitation any Driver introductions and/or Track laps.
- (iv) Post-Race: Unless otherwise directed, the top three finishers in the Race shall proceed to victory lane as instructed by the Officials and fully participate in post-Race ceremonies. Drivers and Competitors shall not remove, obscure or otherwise alter any sponsor recognition. The post-Race ceremonies include but are not limited to the following:

- (1) The winning Driver must attend and participate in post-Race interviews in victory lane. The winning Driver and Car owner (if the owner is in attendance) of a Race agree to permit the display on the Car in victory lane, as designated by Officials, one item from the Star Mazda Championship presented by Goodyear title sponsor and one item from the Car's sponsor as determined by Officials in their sole discretion, including size, location and placement of

such item(s). The winning Entrant agrees to participate in a photograph with the Event sponsor(s) and their guests.

- (2) Unless otherwise directed, the 2nd and 3rd place Drivers must stop in pit lane or such other area as designated by Officials and participate in media interviews.
- (3) The EXPERT Class winner shall report to the victory lane media center for interviews and/or photographs. The EXPERT Class winner's Cars must stop in pit lane or such other areas as designated by Officials
- (4) The 2nd and 3rd place Drivers shall proceed to victory lane and join the Race winner in post-Race ceremonies. The top three finishers shall wear INDYCAR/STAR provided hats in the order designated by Officials. Immediately following victory lane ceremonies, the Race winner, 2nd place Driver and 3rd place Driver as well as the winning Driver in the EXPERT Class shall attend and participate in post-Race interviews in the media center.

- (5) Following the media center interviews, the winning Driver shall attend and participate in a satellite media tour and radio media tour, if requested.
- (6) All other Drivers agree to attend and participate in the post-Race media center interview process, if requested.
- (7) The Drivers and Entrants mathematically eligible to win the end of season Driver and/or Entrant point standings agree to attend and participate in activities as directed by Officials.
- (8) The winning Driver and Car owner must attend and participate in the end of season celebration at such times and locations as designated by Officials.

(f) Technical Inspection and Impound – Officials require the following technical inspections per Event:

- (i) Pre-Event Technical Inspection - Each Car is required to pass a technical inspection at each Event prior to qualifying. Times when the Officials will accept Cars for the mandatory pre-qualifying inspection will be announced during the chief mechanic

Meeting and/or posted on the Star Mazda Championship presented by Goodyear website under the Event section.

- (ii) Impound - After each qualifying session or Race, all Cars shall proceed directly to impound unless otherwise directed by Officials. The Driver and the Driver's racing equipment shall remain with the impounded Car until that Driver and or Car are released from impound by an Official. If the Driver is separated from his/her Car for post-session ceremonies that Driver shall proceed without delay from the authorized activity directly to impound and report to an Official. For those Cars kept in impound for further inspection, only two Members representing the Driver's Team shall be permitted in impound.

(2) Penalties -

(a) Officials in their discretion shall determine whether a Member has failed to attend or engaged in inappropriate conduct during any meeting or mandatory activity

(b) Whether in attendance or not, Members shall be charged with knowledge of the matters discussed at meetings (whether mandatory or not). A Member and the Member's Entrant waive the right to protest and/or appeal any penalties be assessed for any violation of the Rules if the Member was not present at the meeting when the subject was discussed.

(3) No cellular telephones, wireless mobile devices, personal digital assistants or other recording or transmitting devices may be used during any mandatory meeting and/or activity.

II. MEMBERSHIP

2.1 General - INDYCAR is a membership organization. Each Member shall be deemed to be an independent contractor of INDYCAR, and the relationship between INDYCAR and a Member shall not be deemed to be a partnership, joint venture or employment relationship by virtue of the membership.

2.2 Application -

A. Each applicant may be required to submit the following properly executed materials for approval by Officials in the form required by Officials:

- (1) Membership application on a form provided by INDYCAR,
- (2) Membership application fee (if any),
- (3) Substance Abuse Policy Authorization for Screening and/or Testing and Release (if the applicant is a Competitor or Official),
- (4) Participant Authorization for Use and Disclosure of Protected Health Information, and
- (5) Any other materials required by Officials.

B. Qualifications for membership shall be determined by INDYCAR and may be periodically revised.

C. Each applicant agrees to fulfill all contractual obligations that such applicant and/or applicant's affiliates may have to INDYCAR, STAR, Event Promoters, Manufacturers and their affiliates. Each applicant agrees

that INDYCAR, STAR, Manufacturers and their affiliates shall have the remedy of specific performance with respect to any and all such obligations in addition to all other rights and remedies available at law or in equity and notwithstanding any terms to the contrary in any other agreement.

D. Each applicant must pay any and all outstanding financial obligations owed by applicant or its affiliates to INDYCAR, STAR, Manufacturers and their affiliates or make other arrangements acceptable to INDYCAR, STAR, Manufacturers and their affiliates.

E. Acceptance or rejection of any membership application is in the discretion of INDYCAR, although the rejection of a membership application may be protested and/or appealed in accordance with the procedures set forth in Rule XII and Rule XIII.

F. If an individual/entity participates in an Event without having properly submitted a fully-executed membership application, the individual/entity, by such participation, nevertheless agrees that the individual/entity is subject to all Rules and all statements, releases and obligations appearing in the membership application as if the individual/entity had properly submitted a fully-executed membership application.

G. Regardless of where the application is executed by the applicant and/or accepted by INDYCAR and/or the credential issued, applicant recognizes and agrees that the Member's application and associated agreement is an Indiana contract and forms a contractual relationship established in the State of Indiana and governed by the laws of Indiana. This contract and relationship is a legal one and applicant should consult his/her attorney if he/she has any legal questions.

2.3 Term - Unless otherwise noted, a membership expires on

December 31 of the calendar year. INDYCAR may issue a credential which may only be valid for a designated period of time or designated Event(s) as INDYCAR deems appropriate.

2.4 Interim Review of Qualifications - INDYCAR in its discretion may review the qualifications of a Member at any time after accepting a membership to determine whether the Member shall continue to qualify for a membership under these Rules.

2.5 Acknowledgement of Release and Assumption of Risk - INDYCAR may periodically request a Member to acknowledge the release and assumption of risk in the membership application, but the failure of INDYCAR to request and/or a Member to sign an acknowledgement does not negate the release and assumption of risk in the membership application or in these Rules.

2.6 Applicable Laws and Jurisdiction -

A. To avoid the need for specific inquiries, each Member represents, warrants and covenants to INDYCAR, STAR and their affiliates that such Member has complied with and at all times will comply with all applicable local, state, federal and country laws, rules and regulations including but not limited to income/sales/use tax, safety/health, transportation, workers compensation, and frequency communications.

B. If there is a misrepresentation and/or a breach of this warranty and covenant, such Member shall indemnify and hold INDYCAR, STAR and their affiliates harmless from any loss or expense incurred by INDYCAR, STAR or their affiliates as a result of any noncompliance including without limitation claims of INDYCAR's, STAR's or their affiliates' sole or contributory negligence and/or a claim that INDYCAR, STAR or their affiliates failed to supervise or achieve compliance.

C. These Rules shall be governed by and construed in

accordance with the laws of the State of Indiana, including its choice of law provisions, and the Members submit to exclusive jurisdiction in Indianapolis, Indiana for any administrative or judicial proceedings.

D. If any litigation is not dismissed pursuant to Rule 13.9, the Member agrees that the matter will be tried only before a judge of competent jurisdiction in Marion County, Indiana, and the Member hereby waives any right to trial by jury in such action.

2.7 Conduct Identification - A claim of intentional or willful and wanton conduct by one Member against another should never be made unless the claim can be supported by established facts. Even if factually supportable, such a claim cannot continue unless the notice required in the membership application is timely completed.

2.8 Litigation - Each Member agrees to reimburse INDYCAR, STAR, their affiliates, and other named Members (“INDYCAR Group”) for all costs of litigation including without limitation travel expenses and attorneys’ fees if either of the following conditions occurs:

A. The Member initiates or otherwise causes a member of the INDYCAR Group to be named as a party in a legal proceeding not permitted or contemplated by the Rules; or

B. The Member requests or compels a member(s) of the INDYCAR Group’s participation in a manner other than as a party to the lawsuit.

2.9 Categories - The following membership categories exist:

Entrant

Driver

Associate

Official

Sponsor

Event Promoter

Media

VIP

2.10 Age -

A. Before an individual shall be eligible for a membership or License and/or to participate in an Event, such individual must be at least 18 years of age and of sufficient age to participate in an Event and to sign an enforceable contract and/or a separate waiver and release form approved by INDYCAR .

B. INDYCAR may have additional or different eligibility requirements for a particular Event. INDYCAR in its discretion reserves the right to limit participation to an age greater than 18 or to require additional documentation as a prerequisite to participation.

C. No one under age 18 shall be permitted in pit lane during Events unless permitted by applicable insurance requirements and previously approved by INDYCAR and the Event Promoter.

D. At INDYCAR's discretion, an individual age 16-17, may be allowed to apply for a Driver's License. All agreements and documentation as to additional obligations as required by INDYCAR must be completed to INDYCAR's satisfaction before the application will be considered. If accepted and for the duration of time that INDYCAR allows, the individual will have all rights of a licensed driver.

2.11 Moral Fitness -

A. The past or current conduct of an applicant or Member can have adverse consequences to INDYCAR, STAR, Star Mazda Championship presented by Goodyear and/or an Event.

B. An applicant or Member must honestly answer questions raised by INDYCAR as to moral character.

C. Applicants and Members agree INDYCAR in its discretion may refuse a membership application or revoke a membership for any reason including but not limited to those related to personal conduct, decency and whether or not any conduct of the applicant or Member creates adverse notoriety with respect to INDYCAR, STAR, Star Mazda Championship presented by Goodyear and/or an Event.

2.12 Physical and Psychological Fitness -

A. INDYCAR may require any applicant or Member to complete a medical history form and/or complete and pass a medical examination as directed by Officials to determine physical and psychological fitness to receive a membership or License and/or to participate or continue in an Event. At any time, the Officials may require a Member to be examined by a designated medical professional at the Member's cost.

B. In addition to Competitors and Officials, any Member who is required to complete a medical history form and/or complete and pass a medical examination shall also be required to immediately notify INDYCAR medical professionals at any time if such Member takes, or is prescribed to take, any drugs or medication (whether or not prescription drugs or medication) and/or if such Member is diagnosed with any medical condition

(including pregnancy) by any medical professional or such Member otherwise knows or suspects that the Member has a medical condition that may impair his/her ability to participate in an Event.

C. Each applicant and Member waives any and all claims regarding any medical examinations and/or examination results, and/or the use or disclosure of such examinations and/or examination results by INDYCAR, its agents and/or its medical professionals including without limitation claims of invasion of privacy and/or breach of confidentiality, notwithstanding whether such claims arise from strict liability, sole or contributory negligence of INDYCAR and/or STAR, breach of contract, or any other legal theory.

2.13 Medical Examinations and Treatment –

A. Examinations and/or treatment of Members, including emergency rescue, performed by medical professionals acting on behalf of INDYCAR are based upon a relationship established in the State of Indiana.

B. Members acknowledge that the medical professionals are acting pursuant to their contractual obligations with INDYCAR and are not acting or rendering personal medical services to the Members. Members acknowledge that they shall have their own personal physicians.

2.14 Fitness to Participate - Members acknowledge that while the INDYCAR medical professionals render an opinion as to fitness, the final determination of a Member's ability to participate is made by the Senior Official.

2.15 Substance Abuse - Members must not use or be under the influence of stimulants, depressants or tranquilizers including but not limited to alcoholic beverages and narcotics during an Event. All Competitors and Officials must complete and return to INDYCAR the current Substance Abuse Policy Authorization for Screening and/or Testing and Release. Every

Competitor and Official, at all times, shall comply with the provisions of the Substance Abuse Policy.

2.16 Alcoholic Beverages, Illegal Substances, and

Unauthorized Weapons - The use or possession of alcoholic beverages, illegal substances, or unauthorized weapons of any sort by a Member during an Event, as well as the presence of alcoholic beverages, illegal substances, and unauthorized weapons on the Track, or in other restricted areas during the Event, is strictly prohibited. Any Member violating this Rule may be disqualified and/or suspended and may be subject to additional penalties. Any Member who shows visible signs of exhaustion, physical or psychological impairment, or other physical or psychological irregularities may be disqualified and/or excluded from an Event and subjected to additional examinations and/or penalties.

2.17 Substance Abuse Policy –

A. Any Member may be required to undergo a physical or psychological screening, test or other examination which may include without limitation the collection of urine, blood, oral fluid/saliva, hair breath and/or any other scientifically-acceptable method of analysis in order to be involved in and/or participate or continue in an Event, and such Member waives any and all claims of invasion of privacy and/or breach of confidentiality as set forth in Rule 2.12.

B. INDYCAR reserves the right to conduct targeted screening and/or testing and scheduled and/or random screening and/or testing for drugs and other substances at its discretion, and the Member agrees to submit to such screening and/or testing if requested. Screening and testing may be for any drug, medication or other substance including without limitation alcohol. INDYCAR may suspend or otherwise penalize any Member for failure to promptly cooperate with any such request for screening and/or testing. INDYCAR may also suspend or otherwise penalize any Member if the results of any screen or test

are positive for any illegal substance or any substance that in the opinion of INDYCAR would enhance, impair or otherwise affect the Member's ability to be involved in and/or participate in an Event.

2.18 Violation of Laws - Being charged with a violation of the law, whether alcohol/substance abuse or any other laws, may be grounds for suspension or other penalty. Any Member charged with any violation of the law relating to alcoholic beverages or illegal substances, or charged with any felony, must notify the Race Director prior to the next scheduled Event or within 72 hours of being so charged, whichever is earlier.

2.19 Medical Records - Each Member agrees and consents that in the event of injury or death arising in any way out of the Member's involvement and/or participation in an Event, INDYCAR may obtain access to and copies of any and all medical records of the Member related to such injury or death.

2.20 Memberships, Licenses and Credentials -

A. Prior to gaining access to Restricted Areas, each individual must have the necessary and appropriate credential. The holder of a membership, License or other credential shall produce it for inspection upon demand of any Official or security personnel at any Event along with any other document needed to confirm identification.

B. The annual credential consists of both the lanyard and the INDYCAR issued hard card. Use of one without the other invalidates the annual credential. In addition, a Member must not use a prior Event's, prior season's or other series' credential.

C. A membership, License or any other credential (including race mode) may not be disassembled, transferred, assigned, sold, altered or duplicated. It must be used only by the Member to whom it is issued. If a Member intentionally or unintentionally disassembles,

transfers, assigns, sells, alters, duplicates or otherwise permits another individual or entity to use or attempt to use the membership, License or credential, then the Member may be penalized and shall indemnify and hold INDYCAR and STAR harmless from any loss or expense incurred by INDYCAR and/or STAR arising in any way from Member's action, even if Member asserts that INDYCAR's loss or expense and/or STAR's loss or expense is due to INDYCAR's negligence and/or STAR's negligence.

D. The Rules regarding memberships, Licenses and credentials are equally applicable to parking passes, Event credentials, golf cart passes and all other privileges issued to a Member by INDYCAR, STAR or an Event Promoter not expressly transferable, are not assignable or eligible for sale.

E. Officials may require an applicant and/or Member to provide a valid official government-issued identification including photograph and date of birth in order to receive or retain a credential. Acceptable identification includes but is not limited to state driver's licenses, passports, military cards, etc, but does not include identifications issued by educational institutions.

F. Members agree to be responsible for the conduct of their Participants and guests.

III. SANCTIONS/GOVERNING

3.1 Promotion of Events - INDYCAR will sanction/govern Race Events with STAR through an Administrative Agreement. STAR will organize Race Events with an Event Promoter through an Event Agreement. The Event Agreement contains additional terms regarding the Race Event, such as those relating to postponement dates.

3.2 Event Promoter Responsibilities –

A. Event Promoters shall be responsible for designated operations of the Events including without limitation responsibility for obtaining and providing, at the Event Promoter's expense, insurance as required by the Event Agreement, safety precautions, services and vehicles for Competitors and spectators including medical/rescue personnel, equipment and facilities (such as ambulances, helicopters and examination facilities and equipment); physical condition of the Track; spectator control; and fire protection, all to meet or exceed the minimum requirements provided by INDYCAR, STAR, and/or the ASN.

B. INDYCAR and/or STAR shall not be responsible or in any manner liable for any of the Event Promoter's responsibilities under the Event Agreement or the Rules even though the Event Promoter fails or refuses to perform such functions, duties and responsibilities, in whole or in part, or if INDYCAR and/or STAR voluntarily assumes performance of any or all of the Event Promoter's specific functions, duties and responsibilities.

3.3 Restrictions - Event Promoter shall not schedule any

ancillary or supporting entertainment, events or activities that include racing activity on the Track during the Event without prior written approval by INDYCAR and/or STAR, in each instance.

IV. ENTRANT/DRIVER LICENSING AND FREQUENCY/CAR REGISTRATION

4.1 General –

A. Licensing criteria are available from the INDYCAR office and may vary depending on the particular on Track activity. Entrants and Drivers must remain in good standing to participate in an Event. All Licenses shall be made on provided forms and submitted for approval. INDYCAR and ACCUS-FIA (and another ASN, if applicable) in their discretion shall determine whether to approve and issue a License application. Applicant shall pay any and all costs associated with satisfying the License criteria. Driver Licenses are not transferable at any time; Entrant Licenses are not transferable without prior written approval .

B. Licenses are revocable at any time and for any reason. Without limiting the foregoing, Licenses for rookie drivers are granted on a temporary basis.

C. Licenses may be limited to a particular type of Events or for a specified period of time.

D. Licensed Entrants and Drivers are eligible to earn awards and points as described in the Rules.

E. Eligibility for a License shall be determined based on such factors that are indicative of the applicant's ability to participate satisfactorily in an Event.

F. Fees may be charged for Licenses.

(1) Fees are non-refundable. No fee or part thereof

shall be refunded to a licensee because the licensee ceases to participate in Events regardless of the reason for such cessation.

(2) License fees are for an entire season and will not be pro-rated for any reason including without limitation for Members who begin participating after the first Event.

G. A License is valid only for the current season and/or as otherwise restricted. Unless otherwise noted, all Licenses shall expire on December 31 of the calendar year.

H. An applicant may protest or appeal denial of a Driver or Entrant License and membership application, grade of Driver's License, determination of rookie status or eligibility for a rookie orientation or refresher test in accordance with the procedures set forth in Rules 12 and 13.

I. INDYCAR may continuously re-evaluate the eligibility and performance of a Driver or Entrant to determine if the Driver or Entrant shall remain licensed. As part of such evaluation, INDYCAR may consider input from Officials, Drivers, and others as INDYCAR determines appropriate and may require a Driver or Entrant to participate in Testing under the observation of Officials, Drivers and others.

4.2 Entrant and Driver Licensing -

A. Entrant License -

(1) General -

(a) The individual signing the application represents that the individual is authorized to act on behalf of the named Entrant in all matters. Additional Entrant representatives may be listed, and the authority of any individual may be

limited. One Entrant representative must be present at STAR Mazda Championship Presented by Goodyear test and Race Events.

(b) If an Entrant representative's status changes, an individual authorized to act on behalf of the Entrant may be required to submit a new application for that Entrant for approval. An Entrant may be required to submit another Entrant License fee and resubmit any other materials including but not limited to Entry forms,

(c) Upon request, INDYCAR must be provided information satisfactory to INDYCAR regarding ownership of an Entrant.

(2) Eligibility -

(a) **General** - After receipt of the application, the Entrant's competitive viability will be assessed to determine whether to approve and issue the License. Factors taken into account may include:

- (i) purchase agreements with Manufacturers;
- (ii) purchase and/or lease agreement for its shop; and
- (iii) existence of employment agreements with key personnel including but not limited to manager, engineer, chief mechanic and Driver.

(b) **Entry** - Upon issuance of the Entrant License, the Entrant may submit Entry forms identified by the Car number assigned by STAR. The Entry (Car with Driver) must display the Car number at all times during the Event, and all

points and awards earned by this Entry will be credited to that Car number unless otherwise determined by Officials. An Entrant intending to compete with multiple Entries at a single Event must obtain an Entrant License with a unique Car number for each Entry.

(c) Chief Mechanic -

- (i) Each Entry must have a chief mechanic.
- (ii) The chief mechanic is responsible for the Car complying with the Rules.
- (iii) The chief mechanic must be present in his/her Car's assigned pit when the Car is on the Track and must accompany the Car during all technical inspection processes.
- (iv) Entrant agrees its chief mechanic shall serve as an authorized Entrant representative regarding all issues related to technical inspection.
- (v) An Entrant shall replace its chief mechanic if Officials in their discretion determine that the chief mechanic is not sufficiently qualified.

(d) Manufacturers - The Manufacturers may require an Entrant to enter into lease and/or purchase agreements in a form acceptable to the Manufacturers and meet other Manufacturer requirements before the Manufacturers are obligated to supply components to such Entrant.

B. Driver License -

(1) General -

(a) Licenses may be approved and issued to individuals determined eligible by Officials in their discretion to compete in an Event and who otherwise meet the application requirements.

(b) INDYCAR and/or ACCUS-FIA (and another ASN, if applicable) in their discretion shall determine the grade of the License issued to a Driver.

(c) In order for a driver to compete in any Event, the driver must hold a Driver's License and at any time may be required to:

- (i) participate in any required testing,
- (ii) provide an updated resume, certified birth certificate, and/or
- (iii) furnish a current medical clearance acceptable to INDYCAR attesting to the driver's fitness for racing.

At any time, INDYCAR may require a foreign Driver to provide proof of United States residency and an international letter of authorization from the Driver's ASN.

(2) Eligibility -

(a) An applicant must have sufficient competitive driving ability and experience as determined by the Race Director in his discretion.

(b) The Race Director's determination as to ability will take into account all such factors as

the Race Director deems relevant. The criteria taken into account by the Race Director are listed below. The criteria are subject to change at any time. An applicant must contact the Race Director for the current Race-specific criteria.

(c) An applicant may be required to provide:

- (i) A current resume containing a complete history of the applicant's competition to date and demonstrating the applicant's ability to properly handle the Car;
- (ii) A letter of recommendation from the race director of the series in which the driver last competed; and
- (iii) Such other information as INDYCAR may request.

(d) **Medical Information** - The applicant must provide the medical information required by INDYCAR and must successfully complete INDYCAR-prescribed physical and psychological examinations, which may include without limitation eye, neurological and substance abuse screening and/or testing.

(e) **Rookie** - A Rookie is a Driver who has competed in fewer than three professional open wheel races (Star Mazda Championship presented by Goodyear Events or higher). If a Driver begins the season as a Rookie, he/she will remain a Rookie until the end of the season.

4.3 Radio and Wireless Frequency Registration - All Members agree INDYCAR and STAR own all voice and data collected by or on behalf of INDYCAR and STAR including without limitation all voice and data from radio. Each Member transmitting or receiving any signal including but not limited to

all voice and data shall:

A. Provide the specifications (e.g., manufacturer, make, model, serial number) of the radio to be used in the Car to an Official and/or to a designated representative named by the Officials prior to the first Race;

B. Not password-protect or otherwise effect the Officials and/or the Official's designated representative's ability to read the radio to be used in the Car at any time;

C. Notify the Officials and/or the Official's designated representative immediately upon changing any of the specifications of the radio to be used in the Car regardless of the country in which the Event is taking place;

D. Register all such frequencies, including primary and backup Car frequencies, with the Officials and/or the Official's designated representative at each Event taking place in the United States a minimum of 24 hours prior to the start of an Event. Events held outside of the United States will require the frequencies to be submitted earlier. Members will be informed per Event for Events being held outside the United States on when to submit their radio frequencies.

E. Notify the Officials and/or the Official's designated representative immediately upon changing primary Car or crew to frequency, regardless of the country in which the Event is taking place;

F. Operate all such frequencies in the 450 – 470 mhz UHF spectrum with a 12.5 channel spacing;

G. Not encrypt or digitize any Car or crew communications on Race day;

H. Shall give consent, and hereby does consent, to the taping and/or rebroadcast by INDYCAR, STAR or their designee of any such transmissions through any and all

media and for any and all purposes; and

I. Shall comply with all applicable laws of the country in which the Event is taking place regarding such use, and indemnify and hold INDYCAR, STAR and their designees harmless with respect to the failure to comply with applicable laws, even if the violation involves INDYCAR, STAR or their designee's sole or contributory negligence.

4.4 Car Registration - A Car may compete only in the Events in which the Car is entered. The Entry form must establish the Entrant's right to enter the Car in the Event and include proof of ownership of the Car acceptable to Officials upon request. After receipt of the Entry form, Officials may examine the Car. Officials will use two unique numbers to identify the Car:

A. Chassis Number (serial number) – The unique number assigned by STAR.

B. Car Number - STAR allows Entrants to apply for a Car number of their choice. Choices are limited by the following:

(1) Car numbers 1-10 are reserved for the Entrant whose Entry finished in that position at the end of the previous season. The number is awarded to the Entrant who initially submitted that Entry into the previous season's championship.

(2) The numbers outside of 1-10 are assigned on a 'first come first serve' basis with preference given to those Entries who were assigned the number in the previous season.

(3) All Car numbers are owned by STAR. No Member has a right to or ownership interest in a Car number. An Entrant may not sell or assign a Car number without the prior written consent of STAR.

(4) Assignment, or reassignment, of Car numbers is in the discretion of STAR and may not be protested or appealed. All Entrants desiring a particular Car number must submit a request in writing along with their completed Entry form and fee. STAR does not guarantee a request will be granted.

(5) After a Car number is assigned to a particular Entry under an Entrant License, it will remain with that Entry until the end of the season, provided that the Entrant enters a Car and displays the Car number on the Car at each Event. If the Entrant does not enter a Car and/or display the Car number on the Car at an Event, STAR may reassign the Car number.

(6) Car number stickers issued to an Entrant by STAR must be used without modification.

(7) Car numbers location must conform to the emblem placement section of the Rules (See Rule 1.3 (B))

(8) **Car Appearance** - STAR has the right to control the appearance of Cars to distinguish one Car from another.

V. ENTRIES

5.1 General - All Entry applications shall be completed on forms provided by Officials in the form required by Officials and shall be subject to the approval of Officials. Entries are not transferable without the prior written approval of Officials. An Entry consists of an Entrant, Driver and numbered Car.

A. Entrant -

(1) An approved Entry serves as the authorization to compete in a specific Event(s) on behalf of the specific Entrant to whom the Car number is assigned under the Entrant License.

(2) If an Entrant participates in an Event without having properly submitted a fully-executed Entry form, the Entrant, by such participation, nevertheless agrees that the Entrant is subject to all Rules, and all statements, releases and obligations appearing in the Entry form for the Event, as if the Entrant had properly submitted a fully-executed Entry form.

B. Driver -

(1) Each Entry form must list a Driver.

(2) Another Driver may be substituted for the original Driver prior to the first practice session, provided notification is given to Officials, and Officials approve the substitution. Approval

may be granted or withheld in the discretion of Officials. If a Driver has participated in one or more official sessions before the Driver change is made, the previous Entry must be withdrawn and a new Entry submitted.

C. Car -

(1) Participation of a Car in an Event - In order to participate in an Event, the Car must be properly entered and be designated and explicitly identified by Car number on only one Entry form for that Event. Any Car participating in an Event while in noncompliance with the above requirements may be disqualified, and any Competitor who causes such noncompliance may be disqualified and/or otherwise penalized..

(2) Car Substitution during an Event (“Backup Cars”) - Another Car may be substituted for the entered Car provided the substitution is made, notification is given to Officials and approval is granted by Officials.

5.2 Fee - Entry fees must be paid as directed by Officials.

5.3 Deadline - The Entry deadline shall be stated on the Entry form. Unless otherwise specified on the Entry form, the hour of closing shall be 5 p.m. E.D.T. on the date specified. Officials may accept or refuse to accept late Entries. Late Entrants, if accepted, may be penalized..

5.4 Electronic Entries - An Entry by computer, facsimile or other means delivered by the Entry deadline may be accepted in Official’s discretion, provided the hard copy it is subsequently received accompanied by the Entry fee within 48 hours of Official’s receipt of the electronic Entry or as otherwise directed..

5.5 Reopening of Entries - If Officials postpone an Event,

Officials may authorize the reopening of Entries. Reopened Entries shall close not less than 48 hours before the declared starting time of the postponed Event.

5.6 Failure to Participate - Any Driver, Entrant or other Member who by Entry form or other means has agreed to participate in an Event may be penalized for failing to participate.

5.7 Entry Change – All changes to an approved Entry form shall be completed on forms provided by Officials and subject to approval by Officials prior to the Entrant's Car participating in any Track activities.

VI. TESTING

6.1 In General - Members are only permitted to conduct Testing in accordance with this Rule VI.

A. “Test” is defined as any period during which a Member conducts any Testing.

B. “Testing” is defined as the use of the chassis, Engine, transmission, and tires, separately or in any combination on Track during a period other than a Race Event.

C. “Use” is defined as being propelled under power generated by the Engine.

6.2 Approved Testing -

A. “Star Mazda Championship presented by Goodyear Test” - A Star Mazda Championship presented by Goodyear Test is a Test authorized by STAR in which all Entrants are permitted to participate

(1) Eligibility

(a) Drivers - Drivers must have completed all License/membership requirements and have had those Licenses/memberships approved by Officials.

(b) Entrant - Entrants must have completed all License/membership requirements and have had those Licenses/memberships approved by Officials.

(c) Participants - Participants must

have completed all membership requirements and have had those memberships approved by Officials.

(2) Open Tests

(a) Barber – TBD

(b) Infineon Raceway – TBD

(c) Milwaukee Mile - TBD

(3) Promoter Test Days - May be authorized by Star Mazda Championship Presented by Goodyear as part of an Event weekend.

B. “Private Test” - A Private Test is a Test organized by an Entrant and subject to the following restrictions.

(1) Entrants will be permitted unlimited Private Tests until January 1, 2011.

(2) On or after January 1, 2011, Testing at any facility included in the 2011 Star Mazda Championship Presented by Goodyear Championship schedule is not permitted until the Championship Event has concluded or unless otherwise specifically permitted by Officials through a public notice.

VII. ON TRACK PROCEDURES

7.1 General

A. Track Condition - The Race Director determines the Track Condition.

(1) Track Conditions include the following:

(a) **Green Condition** - The green condition signifies racing conditions.

(b) **Yellow Condition** – The yellow condition signifies caution.

(i) **Oval Events** – All Cars must slow down.

(1) **Practice** - Any yellow light or flag displayed is considered to be a caution. The Drivers shall reduce speed immediately, maintain position, yield to safety vehicles and/or personnel and return to their assigned pits. All times posted during the lap shall be voided.

(2) **Qualifications** - A qualifications attempt is stopped.

(3) **Race** -

(i) Any yellow is considered to be a caution and the Safety Car may or may not be employed to bring the field under control. Whenever the Safety

Car is utilized, it will remain on Track for a minimum of two laps subject to the Race conditions and the discretion of the Race Director. The Race Director may designate to the lead Car the duties of the Safety Car if the Safety Car is not employed.

(ii) The running order as of the last completed green condition lap immediately prior to the yellow condition shall be determined as follows:

If INDYCAR governs an IZOD IndyCar Series and/or Firestone Indy Lights race at an Event venue on the same weekend: the Race Director shall consult with other Officials and access such other means as he determines necessary or appropriate, including without limitation, visual, video, and data.

At all other Oval Events: the Race Director shall consider the Cars positions at the start/finish line on the previous lap. Cars that are running a lap or more down from the leader are considered part of the current running order when used to determine Car position at the yellow flag.

(iii) If a Driver enters the pit lane during a yellow condition period, regardless of whether he/she is

responsible for causing the yellow condition, the Driver forfeits his or her Track position and upon returning to the Track, must assume a position at the rear of the field.

(iv) During all yellow condition laps and until the green condition, if a Driver stops or falls out of position for any reason, that Driver may be penalized.

(ii) Road/Street Course Events

(1) **Local** – Drivers shall reduce speed and be prepared to stop. Passing is not permitted between the first yellow condition and the subsequent green condition.

(2) **Full Course** - Waving double yellow flags is greater danger. Racing ceases. Drivers shall reduce speed immediately. During practice and qualifications, any times posted during the full course yellow condition shall be voided.

(iii) All Events - During a Race

(1) All Drivers are required to slow to caution speed, at which time the Safety Car may or may not be employed to pick up the leader. If the Safety Car is not used, the Race Director may delegate the responsibilities of the Safety Car to the Race leader. All other Drivers are required to form a single file line, at a minimum distance (“pack up”) behind the Race leader. The Track will remain under a yellow condition until the field is packed

up behind the leader. Drivers are expected to promptly pack up while observing the yellow condition. The field must maintain pace and the Race Director in his discretion shall determine if the leader or any other Car fails to pace the Race as directed. The Race Director in his discretion shall determine the type and timing of any penalty as he deems appropriate. Such decision is not subject to protest and/or appeal.

(2) Upon the commencement of a yellow condition, the pit lane shall remain open unless otherwise announced by the Race Director. Any Cars entering the pit lane shall restart at the rear of the field. Any Driver at or past the pit commit line prior to commencement of the yellow condition may make a pit stop and exit the pit lane with caution provided that the Safety Car has not passed the location designated by the Race Director.

(3) The pit lane will start and end at points designated by Officials. The pit entrance and pit exit lanes are considered part of the Track. Drivers exiting the pit lane shall rejoin the back of the pack relative to the position they are to Safety Cars and/or Race leader on Track as they cross the blend out line. Taking improper position upon leaving the pit lane or failure of a Driver and/or Entrant to follow the direction of Officials may result in a minimum one lap penalty. The Official's determination of the Car order is not subject to protest or appeal.

(4) A Car may not use pit lane to improve its position relative to the Safety Car or any Car remaining on the Racing Surface, but a Car may improve its position relative to other Cars in pit lane.

(5) In the case of a pass in progress when the yellow condition is displayed, the overtaking car is expected to fall back and take station behind the Car he or she was attempting to pass. Racing conditions are no longer in effect upon declaration of the yellow condition.

(6) Laps completed will be scored, unless stated otherwise by Officials.

(c) **Red Condition** - The red condition signifies that racing conditions are no longer in effect. Passing is not permitted.

(i) Competitors must proceed cautiously to a location designated by Officials.

(ii) Unless otherwise instructed by Officials, no work is permitted on the Cars, except Entrants may plug in a booster battery and apply towels to bodywork.

(2) The decision as to whether to declare a green, yellow or red condition may not be protested or appealed.

(3) While additional information regarding Track Condition is included in the Flag Code section for convenience, this information is equally applicable to the other systems of notification (Track Lights and Race Control Frequency).

B. Decisions by the Race Director are effective at the time he declares his decision, regardless of the time the declaration is received by the Competitors. The Officials may use multiple systems to notify Competitors of such decisions. All Competitors shall react to the first notification they receive. The systems include the following:

(1) **Track Lights** – Green and/or yellow lights positioned around the Track above the outside retaining wall adjacent to the debris fence.

(2) **“Race Control Frequency”** – The radio frequency used by Officials to provide direct communication to Entrants during Events. The spotter and a representative of the Entrant in the Entrant’s pit must both monitor it. Entrants failing to monitor it shall be charged with knowledge of communication on such frequency and are subject to penalty. Competitors failing to follow directions may be penalized.

(3) **Flag Codes (“Flags”)** -

(a) **Green:** signifies a green condition.

(i) **All Events**

Practice – A practice session has begun.

Qualifications – A qualifications attempt or segment has begun.

Race – Unless otherwise instructed, a Race has begun.

- (ii) **Road/Street Course Events Only** -
The Track downstream of a yellow condition is clear; passing permitted.

(b) **Yellow**: signifies a yellow condition.
During Road/Street Course Events:

- (i) **Local** – A stationary yellow flag is shown at a marshal's post; no passing.

- (ii) **Full Course** - Double yellow flags; no passing.

(c) **Black** - The Driver shall proceed to the pit area on the next lap and follow the instructions of Officials.

- (i) The Race Director may declare a black flag for a Car if he determines that:

(1) Any condition exists which could cause the Driver or the Driver's Car to create a hazard to the Driver or others;

(2) Upon request by the Entrant

(3) If the Driver or Team has violated the Rules.

- (ii) When a Driver is ordered to the pit lane because of a hazardous condition of the Driver's Car, the proper repairs must be made and approved by Officials before the Car will be permitted to continue in the Event.

- (iii) In the event of a violation of the Rules, the black flag may be declared to impose a penalty (a "black flag penalty") which

may include repositioning Cars or requiring a Driver to:

- (1) Drive through pit lane at pit lane speed limits ("drive through");
 - (2) Stop in pit lane ("stop and go"); or
 - (3) Stop in pit lane for a prescribed period ("detention").
- (iv) The Race Director shall determine the type and length of any black flag penalty. The penalized Car shall proceed to the pit lane as directed by Officials and may return to the Race only upon the declaration of Officials. In the case of a Driver violating the Rules, no work may be performed on a Car during the execution of a black flag penalty. Should any such work occur, the conditions of the penalty are unfulfilled and the penalty procedure must be executed again in its entirety on a subsequent lap. The penalty may not be protested and/or appealed.
- (d) **Black with White Cross** - Officials have ceased scoring the Car until further notice.
- (e) **Blue Flag with or without Yellow Diagonal Stripe** - An approaching Car is attempting to overtake and the Car being signaled must give consideration to the overtaking Driver.
- (f) **White**
- (i) **Oval Events**

(1) Qualifications - The Car has commenced its last lap.

(2) Race - The leader has commenced the leader's last lap and will continue to be displayed to all successive Cars as they cross the finish line

(ii) Road/Street Course Events

(1) Practice/Qualifications – A Car is not at speed on the Racing Surface.

(2) Race – When displayed from the starter's stand, the leader has commenced his/her last lap and will continue to be displayed to all successive Cars as they cross the finish line.

(iii) All Events – The starter may or may not indicate the last lap by displaying one finger and/or the last lap may be announced over the 'Race control Frequency'.

(g) White with Red Cross - Safety vehicles and/or personnel are on Track.

(h) Alternating Red and Yellow Stripes - Oil, water or other substance has altered the Racing Surface.

(i) Checkered - The practice session, qualifications or Race is completed. The checkered flag will be displayed to the Race leader upon completion of the Race leader's last lap and will continue to be displayed until each Car running has received the checkered flag.

(j) Red – signifies a red condition.

- (i)** Unless otherwise declared by Officials, a Race stopped by the declaration of a red condition will be considered incomplete unless more than 50% of the scheduled number of laps has been completed by the Race leader. If the Officials schedule the continuation of the Race on a subsequent date or a later time, the Race will be restarted beginning with the unfinished portion of the scheduled number of laps.
- (ii)** If a Race is stopped by the declaration of a red condition and more than 50% of the scheduled number of laps have been completed by the Race leader, the Race may be considered complete in the Official's discretion, and final standings will be determined by ranking all Cars in order by total laps completed and sequence of completion through the last official Race lap.
- (iii)** Officials will make reasonable effort to restart a Race stopped by the declaration of a red condition if the conditions warrant.
- (iv)** The Race Director's decision to restart or not to restart a Race stopped by the declaration of a red condition may not be protested or appealed.

7.2 Timing and Scoring

A. Race Distance and/or Time Limit

- (1) Officials shall announce the scheduled number of laps and/or time limit prior to the start of a Race.
- (2) If Officials determines that there are time limitations due to weather, curfew, or otherwise, Officials may move the start time of a Race, shorten the distance of a Race, set a maximum time for a Race, or take such other actions as it deems appropriate in its discretion.

B. Systems

- (1) The electronic scoring system is the primary scoring record. Officials will record the physical sequence in which each Car crosses the start/finish line, including in pit lane.
- (2) At Oval Events, the serial scoring system is a backup scoring record.
- (3) Other substantiating scoring systems may be used at the discretion of Officials.
- (4) If the Race Director cannot visually determine the position of a Car relative to other Cars, the Race Director may consult with other Officials and access such other data as he or she determines necessary or appropriate to assist him or her in determining the order of the Cars.

C. Start/Finish Line - The scoring of Cars shall begin at the moment when the timing transponder of the lead Car reaches the starting line and the declaration of the green or yellow condition has been given by the Race Director.

- (1) Oval Events - A single start/finish line will be defined across the Track, and extended across the pits where appropriate, in the immediate area of the starter's stand.
- (2) Road/Street Course Events - Officials in their

discretion may designate separate start/finish lines.

D. Lap Credit

(1) A Car will be credited with a lap when its timing transponder crosses the start/finish line after completing one entire lap of the Track with two wheels of the Car remaining on the Racing Surface at all times, as determined from the scoring records. Notwithstanding the foregoing:

(a) If a Car returns to pit lane under its own power and retires from the Race, Officials in their discretion may credit the Car with completion of the lap.

(b) On the last lap of a Race, a Car will be officially credited with a lap when any part of the Car crosses the finish line.

(c) A Car will not be permitted to advance or maintain its position relative to other Cars due to an excursion off the Racing Surface unless the excursion was due to the Car taking evasive action.

(2) A Car shall be considered the first Car out of the Race and shall be awarded the final finishing position based on the following order:

(a) The Car does not leave the starting grid and does not return to the Race,

(b) The Car drops out during the parade or pace laps, or

(c) The Car drops out of a Race before completion of the first lap.

In the event more than one Car is affected in one of the above categories, Officials shall rank such Cars based on their original starting grid positions.

(3) Finishing position will be determined by the sequence in which the Cars completed the scheduled number of laps.

(a) Except as provided in Rule 7.2(D)(1)(b), a Race will be completed by the Race winner at the moment the timing transponder of the Car crosses the finish line on the last lap. The Race will be completed by each other Car when the timing transponder of each Car crosses the start/finish line after the Race leader. Scoring will thereafter cease, and the Race is completed. Officials' decision may not be protested or appealed.

(b) Cars not completing the scheduled number of laps will be ranked in order by total laps completed and sequence of completion, whether the Car is still running or not. The Race Director shall determine the "reason out" for each Car not listed as running. The Race Director's decision may not be protested or appealed.

E. Ties

(1) In the event the scorers are unable to conclusively determine any difference in the physical sequence for two or more Cars at the end of a Race, Officials shall determine the finishing positions based upon the Cars' positions at the finish line on the prior lap.

(2) The Race Director's decisions are not subject to protest or appeal.

7.3. Pit Assignments, Pit Equipment, Pit Personnel, Pit Procedures, and Pit Penalties

A. Pit Assignments

(1) STAR shall make pit assignments based on Team Championship points entering each Event beginning with the Team points leader at “pit out” and continuing in order of decreasing points to “pit in”. Those Entrants not entered into the Team Championship will be placed behind those entered in the Team Championship in order of the date the Team’s Entry for that Event was received. Assignments will be announced at the chief mechanic’s meeting prior to the Event.

(2) If the Event is the first Event of the season, then the Entrants shall be ranked using the following order beginning at ‘pit out’ and continuing to ‘pit in’:

- (a) prior season’s Team point standing.
- (b) order in which the Team Championship Entry was received.
- (c) order in which the Entry was received.

STAR in its discretion shall determine an Entrant’s eligibility.

B. Pit Equipment - All nitrogen bottles must be securely fastened and have a cage device or protected regulator approved by Officials. All nitrogen bottles must be returned to the designated location at the conclusion of the Event.

C. Pit Personnel -

- (1) Only individuals associated with an Entrant may be in the Entrant's hot pit (on the Track side of the pit wall) during an Event.
- (2) Only one crew member is permitted over the wall prior to the Car coming to a stop in order to direct the Driver to the pit box.
- (3) No more than 3 crew members are permitted over the wall per Car stopped in the pit lane.
- (4) Manufacturer's representatives are not considered crew members and will be permitted on the Track side of the pit wall at the Officials discretion.
- (5) Except as otherwise provided by the Rules, all personnel and equipment must remain within the assigned pit.

D. Pit Procedures

- (1) A speed limit will be enforced during Events within the pit lane areas defined by painted lines, cones and/or other visible markings. The pit speed limit will not exceed 45 mph.
- (2) A Driver who passes the Driver's assigned pit by more than one pit must continue around the Track and stop on the next available lap.
- (3) A Car may not be pushed more than two pits beyond its assigned pit during an Event.
- (4) It is not permitted to drive a Car in reverse or against traffic under its own power in pit lane.

E. Pit Penalties - The following matters and any others which may be determined by the Race Director in his discretion are cause for a Car to be penalized:

- (1) Failing to follow designated procedures entering or exiting the pit area, including the acceleration and deceleration lanes;
- (2) Permitting two wheels or more of a Car to leave the designated pit entrance lane or pit exit lane, Penalty referred to as ‘crossing the blend line’;
- (3) Leaving the assigned pit with any equipment or tools attached to or hanging from the Car;
- (4) Permitting any portion of the Driver's Car to pass over or under any air line or hose or any other equipment;
- (5) Permitting the moving Car to come into contact with pit equipment, other Cars and/or personnel;
- (6) Permitting individuals not associated with an Entrant to be in the Entrant's hot pit or permitting more than three crew members to work on the Car during a Race; or
- (7) Permitting the Car to enter a pit other than the Car's assigned pit.

Penalties for violations of this Rule may include, but are not be limited to, a black flag and/or exclusion from the Event. No such decisions may be protested or appealed.

7.4 Pre-Grid – The Pre-Grid procedure shall occur as follows:

A. All Cars are required to be at Pre-Grid prior to the announced Pre-Grid closing time. Failure to be in the Pre-

Grid prior to closing will result in the loss of the grid position.

B. The Car may start the Race from pit lane upon the order from the Race Director.

C. If the Car is unable to start under its own power (jumper battery permitted), the Car must start from pit lane.

7.5 Race Start - The Race Start may be conducted as a Standing Start or a Rolling Start depending on the venue and in the discretion of the Race Director.

A. Road/Street Circuit

(1) Standing Start –

(a) Pre-Race Grid on Track

(i) All Entrants are required to have one representative stationed at each designated grid location on the Track prior to the Cars moving from Pre-Grid to the start grid to assist the Driver in locating the correct Start Box.

(ii) The Entrant representative shall clear the Track (a 60 second board may be shown indicating less than one minute prior to the start of the reconnaissance lap) and remain at the signaling wall perpendicular to the Start Box to assist the Driver in locating the Car in the same Start Box after the reconnaissance lap.

(b) Reconnaissance Lap

(i) The Safety Car will set the speed for the reconnaissance lap. Falling back to accelerate or undertaking a practice start after leaving the Start Box is not permitted. The field must maintain the designated pace.

(ii) Any Car failing to leave the grid with the field, spinning or leaving the Racing Surface, relinquishes its grid position and must start from pit lane, starting upon the order of the Race Director.

(c) Standing Start

(i) At the end of the reconnaissance lap, the Safety Car will enter the pits and the field will take their positions. The front wheels of each Car must remain inside the designated Start Box for each Car until the Start signal.

(ii) Once the Car is in the Start Box awaiting the start sequence, the Entrant representative shall move promptly to the Entrant's pit box.

(iii) Once the Car is positioned in the Start Box, all Members are not permitted on the grid. A 15 second board will be shown once all Cars are in position which will indicate 15 seconds until the start of the light sequence.

(iv) The light sequence will initiate with red lights illuminating from the bottom of the light box and

proceeding upwards until the entire light box is illuminated with red lights

(v) The Race starts once all of the red lights change to green. A delay of not less than half a second but no more than three seconds will take place between the red and green lights.

(vi) If a Car's wheels have moved beyond the Start Box or are moving forward when the start signal turns green, the Driver has committed a false start.

(vii) Officials in their discretion may issue a penalty for a false start. Decisions by the Officials are not subject to protest or appeal.

(d) Aborted Start - An aborted start is indicated by the red lights turning off in reverse order. Instructions will be given to Entrants over the 'Race Control Frequency'. The standing start procedure may be reinitiated or abandoned; if abandoned, the Safety Car will be dispatched to conduct a Rolling Start.

2. Rolling Start

(a) Unless otherwise stated in the Driver's and chief mechanic meeting, there will be two pace laps on the initial start. The Safety Car will be used to pace the field. The Safety Car will have its flashing lights on during the pace laps.

(b) Any Car failing to leave the grid with the field, spinning or going off of the Racing

Surface during a pace lap relinquishes its grid position and must start from the rear of the field.

(c) The Competitors will receive a minimum of two indications of an imminent Start or Restart:

(i) The lights will go out on the Safety Car,

(ii) Yellow flags or lights previously displayed in corners are stopped,

(iii) Officials may notify Entrants using the 'Race Control Frequency'.

(d) It is the leader's responsibility to follow the Safety Car at a designated distance and a speed roughly approximating that of the Safety Car. Scrubbing tires and warming brakes are permitted, provided they can be done without resulting in contact between Cars in the field. When the lights on the Safety Car go out, there shall be no further tire scrubbing or weaving. Drivers must form the field.

(e) The field formation shall consist of two columns. The front row shall be the pole sitter and the second fastest qualifying Car, whether the pole sitter is positioned on the right or left side of the Racing Surface is in the Race Director's discretion.

(f) Once the lights on the Safety Car go out, the pole sitter may smoothly adjust his or her speed:

to increase the likelihood that the Safety Car will not be passed before the Safety Car has safely cleared the Racing Surface, and

to permit the pole sitter to set a consistent pace, at the discretion of the pole sitter in anticipation of the Start of the Race.

(g) Once the pole sitter has established the start speed for the field, that speed must remain constant until declaration of the green condition indicating the Start of the Race. No Driver may improve his or her grid position until the Race has started. Moving left or right out of alignment with the Cars ahead or out of formation is not permitted until the Race has started.

(h) If the field is not properly formed after the Safety Car has entered the pit lane, Officials may abort the start. The pole winner will pace the field for another lap. The Race Director may elect to start the Race without the Safety Car or dispatch the Safety Car to conduct a new start or restart procedure.

(i) In the event of an aborted start, all laps after an aborted start will be scored as Race laps.

B. Oval -

(1) The Race start will be conducted as a Rolling Start for all Oval Races.

(2) The number of pace laps shall be determined by the Race Director.

(3) Any Car failing to leave the grid with the field, spinning or going off of the Racing Surface relinquishes their grid position and must start from the rear of the field.

(4) No Driver shall improve his or her position until crossing the start line on the initial Race Start.

(5) In the event of an aborted start, the pole sitter will pace the field to another start attempt.

(6) In the event of an aborted Start, all laps after an aborted Start will be scored as Race laps.

C. All Events - All of the above notwithstanding, each Driver is always responsible for conduct of his/her Car at all times. Any Driver judged to have intentionally caused or threatened contact with another Car or between other Cars shall be penalized.

7.6. Race Restart

A. After a Yellow Condition

(1) When the Track is clear for racing, the Safety Car may assist the field in preparing for a Restart according to Rule 7.1(A)(1)(c).

(2) Scrubbing tires and warming brakes is permitted until the indication of an imminent Restart. The field must form a single file line behind the Safety Car and/or the Race leader.

(3) At the appropriate time, Competitors will receive a minimum of two indications of an imminent restart:

(a) The Safety Car lights will be turned off, indicating intent to restart the Race at the next opportunity. The Safety Car will accelerate

away from the field and stage at the designated location.

(b) Yellow flags or light previously displayed in corners will be stopped.

(c) The starter may hold up one finger as the field passes on the lap preceding the green condition

(d) Officials may communicate the intended restart on the Race Control Frequency.

(4) After indication of the restart, the Race leader may smoothly adjust his or her speed in anticipation of the Restart.

(5) Once the Race leader has established the Restart speed, he/she must hold that speed until he/she is in the view of the starter. Once the leader is in the view of the starter, the leader may accelerate at his/her discretion; however, once the leader accelerates, he/she must continue to accelerate until the green condition is made or until the restart is aborted. On a restart, no Driver may pass another Driver before the green condition is declared, although moving out of alignment with other Cars, right or left, is permitted.

(6) The Race Director in his discretion may move lapped Cars to rear of the field prior to a Restart.

(7) During the yellow condition, no Car may pass another Car unless:

(a) The other Car is stopped on the Track or the Driver of the other Car has waved all of the passing Cars by in a safe location and promptly confirms such action by radio communication to Officials;

(b) The other Car is not maintaining the pace lap speed; or

(c) Either Car is in the pit lane boundaries.

(8) The penalty for passing the Safety Car or another Car during a yellow condition without authorization by Officials may be a black flag, lap(s) or such other penalty as the Race Director deems appropriate. A position ranking penalty assessed for passing during a yellow condition is discretionary and may not be protested or appealed.

B. From a Red Condition

1. The Cars will be lined up in single file order beginning with the Race leader. The restart order of the remaining Cars will be determined by their physical sequence at the start/finish line during the last scored Race lap.

2. Notwithstanding Rule 7.5(A)(2)(b), the following reasons may be cause for a Car to be placed at the rear of the Restart lineup:

(a) Cars involved in a crash during, or subsequent to, the last scored lap. The decision as to whether a Car has been involved in a crash may not be protested or appealed.

(b) Cars stopped on the Track, including the pits, during the last officially scored lap.

(c) Cars which undergo a change of Driver during the time the Race is stopped.

The Restart order of Cars placed at the rear of the lineup will be in order by total laps completed and sequence of completion.

C. Any laps being run under a yellow condition will be scored. Any Cars remaining in pit lane at the time of a restart may join the Race if approved to compete by Officials.

7.7 Hazardous Mechanical Conditions

A. Officials shall determine whether a Car involved in a crash or with a hazardous mechanical condition will be permitted to continue in the Event or must first return to the pit lane or the garage area for necessary repairs.

B. Officials shall determine how the Car is removed and where the Car is taken. INDYCAR and/or STAR are not responsible for payment, reimbursement, damage or loss to any Car as a result of such removal.

C. After any repairs have been completed by the Entrant's crew, the Car is subject to visual or other inspection by Officials prior to and/or during any further competition. If Officials determine that further repairs are warranted, the Entrant's crew must make those repairs before the Entrant's Car is permitted to return to competition. Cars being repaired will be permitted to return to a Race at the discretion of the Race Director.

D. Officials may approve or disapprove technical or structural changes between the Race start and the post-Race inspection due to contact or material or parts failure.

E. A Car may only receive on Track assistance as directed by Officials.

F. These decisions are in Officials' discretion and may not be protested or appealed.

7.8 Performance Standards - If a Driver's qualifying time exceeds 107% of the fastest qualifier; the Driver has not qualified for the Race ('bumped'). The Driver may be permitted to start the Race as a provisional starter with the

permission of the Race Director. Any such provisional starter shall be black flagged before the Race leaders are close enough to be influenced in any way by the presence on Track of the provisional starter. However, if during the Race any provisional starter is judged by the Race Director to be inside the 107% criteria, the Race Director at his or her sole discretion may permit a provisional starter to continue the Race.

7.9 Post-Race -

A. Technical Inspection -

- (1) All Cars must proceed directly to impound after the Race unless otherwise noted by Officials. The Driver and the Driver's racing equipment shall remain with the impounded Car until that Driver and or Car are released from impound by an Official.
- (2) If the Driver is separated from his/her Car for post-Race ceremonies, that Driver must proceed immediately from the approved activity directly to impound and report to an Official.
- (3) Officials shall direct selected Cars to a designated 'impound area' to be further checked for compliance.
- (4) For those Cars kept in impound for further inspection, only two Members representing the Driver's Entrant shall be permitted in impound.
- (5) A fuel sample may be taken from all Cars prior to and after the Race.
- (6) Officials reserve the right to seal any component.
- (7) If a Car does not successfully complete post-Race technical inspection, the Race Director in his discretion may penalize the Car including without limitation voiding the Car's finishing position.

VIII. QUALIFICATIONS

8.1 All Events – This Rule 8.1 contains qualifications rules for all Events.

A. Overview - Qualifications determines the eligibility and starting position of each Car desiring to participate in a Race by ranking the Car on the basis of its performance in qualifications.

B. Meeting – Officials may hold a specific meeting prior to the start of qualifications. Officials may designate the meetings as mandatory for some Members.

C. Starting Time / Delays/ Interruption and Suspension / Performance Standards

(1) **Starting Time** - The Race Director shall determine the starting time for the qualifications period.

(2) **Delays** - The Race Director may penalize any Member attempting to delay qualifications.

(3) **Interruption and Suspension** –

(a) **Interruption** - Qualifications may be interrupted by the commencement of a yellow condition. Qualifications are interrupted at the moment that the decision to interrupt is made.

(b) **Suspension** –Officials may suspend qualifications for any reason.

(c) The decision to interrupt or suspend an attempt or qualifications (and reasons therefore) may not be protested or appealed.

(5) Crashed Qualified Cars -

(a) If a qualified Car is involved in a crash prior to the Race, Officials in their discretion may permit the Entrant to start either a backup Car or the repaired Car in the Race.

(i) No penalty shall be applied as long as the Entry begins the Race on the designated marked tires.

(ii) In either case, the Car must successfully complete technical and safety inspection and may start the Race in its original qualifying position.

(b) This decision is not subject to protest or appeal.

(c) The Driver of the crashed Car must be approved by Officials in accordance with Rule 1.2(D)(3).

D. Starting Field -

(1) Except as otherwise provided by these Rules, the starting field shall be determined by best time rankings, from fastest to slowest, with the fastest qualifier occupying the pole position, followed by the second fastest qualifier, third fastest, etc., down through the slowest qualifier who has not been “bumped”.

(2) In the event two or more Cars post identical official qualifications times, the Cars shall be ranked

in the order in which the completed qualifications attempts occurred.

(3) A Driver who has qualified a Car may not make an attempt to qualify a second Car.

(4) If a Car remains on Track after receiving the checkered flag, Officials in their discretion may penalize the Entry.

(5) The size of the starting field for each Race shall be determined by the Race Director.

E. Starting Field Determination - No

Qualifications/Qualifications Not Completed - If all Entrants have not been given an opportunity to qualify, Officials shall assign all starting positions based on the following priority:

(a) Current points standings,

(b) Ranking of fastest combined official practice times of each Car, and

(c) Date the Entry was received by STAR.

If the Event is the first Event of the season and Official Practice times are not available, then the Entrants shall be ranked using the prior season's Driver, then Entrant, point standings. STAR in its discretion shall determine an Entrant's eligibility.

F. Subsequent Change in Condition: After qualifications and prior to the start of a Race, an Entry may undergo a change in condition(s) which may void its qualifications time, original starting grid position and/or practice time. In such case, Race Director shall assign the Entry a revised starting grid position(s) based on the following:

(1) Substitute Starting Driver – An Entrant has requested and received permission to change Drivers pursuant to the Rules. The Entrant will start the Race with the same Car/Engine combination but with a different Driver; and

(2) Tire Change – An Entry does not start the race on the designated marked tires.

If more than one Entry is affected in one or more of the above categories, Officials shall rank such Entries within such category according to the discretion of the Race Director.

G. Technical Inspection

(1) All Cars must proceed directly to impound after the qualifying session unless otherwise noted by Officials. The Driver and the Driver's racing equipment shall remain with the impounded Car until that Driver and or Car are released from impound by an Official.

(2) If the Driver is separated from his/her Car for post qualifying ceremonies, that Driver will proceed immediately from the approved activity directly to impound and report to an Official.

(3) Officials shall direct selected Cars to a designated 'impound area' to further check for compliance.

(4) For those Cars kept in impound for further inspection, only two Members representing the Driver's Team shall be permitted in impound.

(5) A fuel sample may be taken from all Cars prior to and after the qualifications attempt. During a

qualifications session, no fuel may be added to a Car.

(6) Officials reserve the right to seal any component.

(7) If a Car does not successfully complete post-qualifying technical inspection, the Race Director in his discretion may penalize the Car including without limitation voiding the Car's qualifying time.

(8) All qualified Cars must remain on the grounds of the Event facility after qualifications unless otherwise permitted by STAR.

H. Post Qualifying Ceremonies – Members shall comply with Rule 1.6(B)(1)(f)(ii).

8.2 Oval Events - This Rule 8.2 contains qualifications rules for Oval Events which are in addition to the rules for All Events contained in Rule 8.1 to the extent not inconsistent with them. In the event of any inconsistency, this Rule 8.2 shall govern Oval Events.

A. Qualifications Order - Cars will qualify in the order of inverted championship points, with the last place Cars qualifying first and the points leader qualifying last.

B. Qualifications Line -

(1) A Car reserves its position in the qualifications line as long as it remains in the designated position and proceeds with the qualifications attempt when signaled. The Official's decision whether a Car is in its designated position or whether to reposition a Car in the qualifications line is not subject to protest or appeal.

(2) If a Driver does not proceed with the

qualification attempt when ordered to do so, he/she will forfeit his/her position in the qualifications order, and he/she may be penalized further by the loss of one qualifying lap.

(3) While the Car is in line for qualification and has not yet started an attempt, the Entrant's representatives may make minor changes to the Car at the discretion of the Officials. After the attempt has been started or completed, the Car is considered to be in impound.

D. Declaration of Intent –

(1) A Car must be presented at the entrance of the “staging pit” when signaled to do so (“declaration of intent”). An Official shall signal a Driver when it is time for the Car to depart from the qualifications line to begin a qualifications attempt. Unless otherwise provided by the Race Director, each Car must depart the qualifications line within 60 seconds of receiving the signal.

(2) In order to make an official qualifications attempt, a Car must have been given the signal to depart from the qualifications line and have moved away with the Engine running prior to the end of the qualifications period.

(3) A Car may not be pushed to start its Engine at the start of a qualifications attempt.

E. Warm-Up Laps – Car shall be given a minimum of one warm-up lap at the discretion of the Race Director.

F. Qualifications Attempt –

(1) Qualifications will be based on one individually-timed attempt per Car. A qualifications attempt is the

best of two timed laps.

(2) A qualifications attempt may only be started and completed under the green condition.

(3) All Cars in the qualifications order shall be given a “guaranteed attempt” to qualify. Notwithstanding the foregoing, the following matters and any others which may be determined by the Race Director in his discretion are cause for a Car to forfeit its guaranteed qualifications attempt and to be listed at the rear of the starting grid in accordance with Rule 8.1(F):

(a) A Car is not presented in the proper order at technical inspection at the designated time;

(b) A Car is not presented in the proper order at the staging pit at the designated time;

(c) A Car fails to leave the staging pit within the designated time;

(d) A Car requires a push start;

(e) A Car leaves the staging pit but fails to receive the green flag; or

(f) A Car fails to receive the checkered flag.

If more than one Car is so affected, the Cars shall be ranked according to Rule 8.1(F).

(4) A qualifying attempt shall be considered started when the front wheels of the Car cross the starting line after the qualifying start signal is given by the starter.

(6) If the qualifications period concludes before each Car has been given its “guaranteed attempt”, then qualifications shall resume at a time designated by

the Race Director, if practicable. If the Race Director in his discretion is unable to resume qualifications and allow each Car its guaranteed attempt, the entire starting field shall be determined in accordance with Rule 8.1(E).

(7) If Officials interrupt qualifications for reasons caused by a Driver or the Driver's crew, the Driver's Car shall forfeit its guaranteed qualifications attempt and may be listed at the rear of the starting grid in accordance with Rule 8.1(F). If the interruption is not due to the actions of the Driver or the Driver's crew, the Car shall not be charged with its qualifications attempt and the Car may be permitted to return to its position at the front of the existing qualifications line and proceed with its guaranteed qualifications attempt.

(8) If a Car has started its warm-up laps or its qualifications attempt when qualifications are suspended, the Car will not be charged with an attempt and may be returned to its position at the front of the existing qualifications line when qualifications resume. Officials shall preserve the qualifications line already established when qualifications resume. If Officials release a Car during a suspension, the Entrant is not required to keep its Car at the designated location during the suspension. Officials shall announce prior to resuming qualifications that all Cars are to be returned to the designated location. Any Entrant not returning an Entrant's Car to the designated location by the designated time shall forfeit the Entrant's guaranteed qualifications attempt and may be listed at the rear of the starting grid in accordance with Rule 8.1(F).

8.3 Road/Street Course Events - This Rule 8.3 contains qualifications rules for Road/Street Course Events which are in

addition to the rules for All Events contained in Rule 8.1 to the extent not inconsistent with them. In the event of any inconsistency, this Rule 8.3 shall govern Road/Street Course Events.

- A.** Qualifications shall consist of one group unless announced by Officials.

- B.** The Race Director in his discretion may elect to divide qualifying into two groups. In such case, all Cars shall participate in one of two groups for 20 minutes per group inclusive of full-course yellow conditions. The groups shall be determined by championship point standings. Times resulting from both sessions will be combined to compose the provisional starting grid.

- C.** If a Car causes a red or full course yellow condition or otherwise interferes with qualifications as determined by the Race Director in his discretion, the Car's best timed lap of the session may be disallowed.

- D.** If a Car causes two red or full course yellow conditions or otherwise interferes with qualifications as determined by the Race Director in his discretion, all session times may be voided, and the Car may not be permitted to participate in the remainder of qualifying.

- E.** During a local yellow condition, a Driver may not improve a lap time if the Driver has yet to pass through the local yellow area.

- F.** The Start Box location, left or right, of the pole sitter shall be determined by the Race Director in his discretion.

IX. PENALTIES

9.1 General - The Race Director may penalize any Member for any violation of the Rules. If an Official observes or is made aware of an act or omission by a Member that constitutes a violation of the Rules and if the Official determines that the act or omission is sufficiently serious to warrant the imposition of a penalty, the Official shall promptly report the violation to the Race Director. The Race Director shall consider the report and shall conduct whatever additional inquiry he deems appropriate under the circumstances. After concluding the inquiry, the Race Director shall determine whether disciplinary action is appropriate, and if so, what disciplinary action should be taken. The Member shall be informed of the determination, and if disciplinary action is imposed, the Race Director shall issue a Penalty Notice to the Member specifying the violation, a brief statement of the circumstances of the violation, and the penalty imposed. If the act or omission of a Member is determined by the Race Director to constitute a threat to the integrity of INDYCAR, STAR, and/or Star Mazda Championship presented by Goodyear or to the orderly conduct of an Event or to constitute a violation during an Event, the Race Director may take immediate action against the Member.

9.2 Scope of Penalties - Penalties for violations of the Rules are divided into two categories: Race Procedure Penalties and Non Race Procedure Penalties. Regardless of the category, penalties are determined by the gravity of the violation and its effects on fairness of competition, the orderly conduct of the Event, and the interests and integrity of automobile racing, INDYCAR, STAR and/or Star Mazda Championship presented by Goodyear. The Race Director shall have the authority to impose any or all or any combination of the following penalties against any Member for any violations of the Rules at any time:

A. Race Procedure Penalties are a result of on Track conduct and are generally imposed during on Track activity. If the imposition of a penalty is near or at the end of an on Track activity and the Driver/Car does not fulfill it, the Race Director may reposition the Driver/Car in the posting of results to reflect the fulfillment of the penalty. The penalty including without limitation any repositioning in a posting is non-protestable and/or non-appealable.

(1) **Black Flag** - The Race Director may impose black flag penalties.

(2) **Laps** - The Race Director may impose lap penalties. Lap penalties shall be imposed in complete laps only. The imposition of a lap penalty shall result in the removal of official credit for the specified number of penalty laps from the total laps credited to the Competitor, and the scoring records and all points and awards shall reflect the removals.

(a) If the lap penalty is imposed during the on Track activity, the removal of official credit shall begin with the Competitor's lap in which the violation occurred and shall include subsequent consecutive laps, as required.

(b) If the lap penalty is imposed after the on Track activity is completed, the Race Director shall determine, based on the severity of the violation, whether the removal of official credit shall begin with the Competitor's last lap and include previous consecutive laps as required, or begin with the Competitor's lap in which the violation occurred.

The Race Director shall make a reasonable effort to notify the penalized Competitor of a lap penalty at the time it is determined. However, failure to notify the Competitor during the on Track activity will in no

way mitigate or change the penalty.

(3) Time – The Race Director may impose time penalties. The time penalty is the loss of time to participate in on Track activity including but not limited to Star Mazda Championship Presented by Goodyear Test, practice session or qualifications period. The time penalty must be fulfilled when directed. The time penalty begins when the Member, the Member's Car and Entrant personnel are in pit lane.

(4) Disqualification - The Race Director may impose a sentence of disqualification. A sentence of disqualification shall entail the loss of any right to compete in the remainder of the current Event from the time at which the disqualifying condition first occurred. It may entail the forfeiture of Entry fees paid or payable, and the Race Director shall determine, based on the severity of the violation, whether or not the sentence includes the forfeiture of points and awards earned up to the moment at which time the infraction for the disqualification first occurs.

B. Non Race Procedure Penalties are a result of on or off Track conduct, but they are typically not imposed during on Track activity. They are protestable and/or appealable unless otherwise noted.

(1) Additional Appearances and/or Meetings – In lieu of a monetary fine, the Race Director may require a Member to participate in appearances and/or meetings in addition to those required of other Members pursuant to the Rules and any other agreements. The Race Director may specify the due date for completion. Failure to participate may result in reinstatement of the monetary fine.

(2) Monetary Fines - The Race Director may issue monetary fines and specify the due date for payment. Unpaid fines may be deducted from any awards payable by STAR to the Entrant or Manufacturer associated with such Member either before or after the specified due date. The Race Director may suspend or refuse to approve renewal of the License and/or membership of any Member failing to timely pay any fine during the period the fine remains unpaid.

(3) Probation - The Race Director may place a Member on probation. Probation is a state of limitation upon a Member's privileges usually following an act or omission occurring before or during membership which calls into question the Member's willingness or ability to abide by standards required for membership. The purpose of probation is to establish a process to allow a Member to prove, by the Member's conduct, that the standards of membership are understood and will be honored at all times. During probation a Member is under heightened scrutiny and the Member can be required to abide by specified standards of conduct which are more stringent than those which are otherwise applicable. If a Member violates probation, the Member is subject to a more severe penalty. The duration and conditions of probation are within the discretion of the Officials.

(4) Suspension - The Race Director may impose a sentence of suspension. A suspension may be total or it may be limited to a suspension of membership or License privileges at a particular facility or facilities, or for a particular series of Events, or for a specified or indefinite period of time. Unless expressly limited, a sentence of suspension shall entail the loss of any right to take part in any capacity whatsoever in any Event. Unless otherwise stated, individuals

under sentence of suspension will not be issued credentials of any kind for an Event and the privileges and uses of the Track, pit area, and the garage area will be denied. Every suspended individual shall return all credentials and/or Licenses to the Race Director who will not return them until the term of the suspension has expired. Any delay in surrendering the credentials and/or Licenses shall be added to the term of the suspension. If the suspended individual does not return the credentials and/or Licenses, the credentials and/or Licenses shall be inoperative and invalid until the lifting of the suspension. Suspension may also render void any previous Entry made for any Event occurring during the term of such suspension and may entail the forfeiture of any applicable Entry fees paid or payable for any such Entries. The Race Director shall have the right to reduce, increase or otherwise modify the unexpired term of a sentence of suspension pronounced under the Rules.

(5) Loss of Points and/or Awards – The Race Director may rule that a Member who violates the Rules will forfeit all or a portion of the points and/or awards earned in that year, including points and awards earned in the Event in which the violation occurred.

9.3 Additional Provisions and Guidelines

A. Improper Conduct - Any Member attempting to or engaging in unsportsmanlike conduct or conduct detrimental to racing, INDYCAR, STAR and/or to Star Mazda Championship presented by Goodyear, whether during an Event or on or off the Track, may be subject to any or all penalties. Improper conduct shall include without limitation:

(1) engaging in reckless, careless, and overly

aggressive actions or unsportsmanlike behavior toward other Members,

- (2) impeding the conduct of an Event,
- (3) causing an avoidable yellow or red condition,
- (4) endangering the safety of others,
- (5) failing to participate at competitive speed,
- (6) failing to participate in close proximity to other Cars,
- (7) failing to follow the direction of Officials, and
- (8) using improper, profane or disparaging language or gestures in reference to Officials, Members or actions or situations connected in any way with INDYCAR, STAR and/or Star Mazda Championship presented by Goodyear or any Event.

B. Blocking – A Driver must not alter his/her racing line based on the actions of pursuing Drivers or use an abnormal racing line to inhibit or prevent passing. Blocking shall result in a minimum of a black flag “drive through” penalty.

C. Avoidable Contact – A Competitor must not initiate or attempt to initiate avoidable contact with another Competitor. A black flag penalty may result at the discretion of the Race Director.

D. Team Tactics and/or Orders – Team tactics and/or orders on the Track are not permitted. If the Race Director determines one or more Members of a Team attempted to or engaged in team tactics or orders, the Race Director may issue a black flag penalty to any or all of the Team’s Car/Driver combinations in addition to other

penalties.

E. Assault or Battery - If any Member shall commit an assault or battery during or in connection with an Event, such Member may be disqualified and/or suspended by the Race Director and may be subject to additional penalties.

X. CHAMPIONSHIPS, POINTS, AND POINT FUNDS

10.1 Championships and Point Standings - STAR

recognizes several awards and championships based on points awarded at each Race Event. STAR calculates and publicizes rankings of all Driver and Teams following the completion of each Race Event. Points and awards are determined by these Rules.

10.2 Crediting of Points - STAR has established the following system under which eligible Drivers and Teams may accumulate points.

A. Star Mazda Championship presented by Goodyear

(1) Driver points will be credited based on the official finishing position of each Driver within the Star Mazda Championship presented by Goodyear at each Event.

(2) Driver points will be credited to each Driver entered in the Star Mazda Championship presented by Goodyear as follows:

<u>Race Finish Pts.</u>	<u>Race Finish Pts.</u>	<u>Race Finish Pts.</u>
1 st44	13 th23	25 th11
2 nd40	14 th22	26 th10
3 rd37	15 th21	27 th9
4 th34	16 th20	28 th8
5 th32	17 th19	29 th7
6 th30	18 th18	30 th6
7 th29	19 th17	31 st5
8 th28	20 th16	32 nd4
9 th27	21 st15	33 rd3
10 th26	22 nd14	34 th2
11 th25	23 rd13	35 th1
12 th24	24 th12	

(3) The following additional points shall be awarded at each Event:

(a) One point is awarded to the Driver posting the best qualifying time

(b) One point is awarded to the Driver posting the best Race lap time.

(c) No fastest qualifier point will be awarded if the starting field is determined in accordance to Rule 8(E).

B. EXPERT Class Championship –

(1) Driver points will be credited based on the official finishing position of each Driver within the EXPERT class at each Event.

(2) End of season finishing positions for the EXPERT Class Drivers are derived from the eight best finishes of each Driver

(3) EXPERT Class championship points will be awarded to each Driver entered in the Star

Mazda Championship presented by Goodyear and in the EXPERT Class as follows:

Race Finish Pts.

1 st	20
2 nd	16
3 rd	14
4 th	12
5 th	11
6 th	10
7 th	9
8 th	8

Race Finish Pts.

9 th	7
10 th	6
11 th	5
12 th	4
13 th	3
14 th	2
15 th	1

C. Team Championship - Team Championship points will be credited only to a Team holding valid Entrant Licenses at the time of the Event, competing with a properly entered Car or Cars and displaying the assigned Car number (s) throughout any Event.

(1) Points will be awarded for the top two finishing positions each Event for each Car entered under a Team's Entrant Licenses as follows:

Race Finish Pts.

1 st	20
2 nd	16
3 rd	14
4 th	12
5 th	11
6 th	10
7 th	9
8 th	8

Race Finish Pts.

9 th	7
10 th	6
11 th	5
12 th	4
13 th	3
14 th	2
15 th	1

(2) Any single Car Team entered in the championship will receive a bonus of 5 points for each Race provided the Team's only Car takes the green flag.

(3) For the purpose of scoring the Team championship points, the championship will not score Cars on any multi Car Team once that Team's top two finishing Cars are credited.

(4) A Team must start at least one Car in not less than 8 Races to be eligible for the end of season awards. Points and awards will be accrued from the date of paid entry by the Team into the Team Championship until November 15th of the Race season.

10.3 Ties -

A. At the close of the season, the Driver with the highest number of ranking points shall be declared the Champion. In the case of a tie in the championship, STAR will determine the position based on the most first place finishes. If there is still a tie, STAR will determine the champion by the most second place finishes, then the third place finishes, etc., until the tie is broken.

B. STAR will apply the same system to other ties in the rankings at the close of the season and at any other time during the season.

10.4 Points Fund - STAR will award and distribute an end of the season points fund.

XI. AWARDS

11.1 Approval - The distribution of all awards must be approved by STAR.

11.2 Awards -

A. STAR in its discretion shall determine the eligibility, nature and amount of all awards for:

- (1) each Event, and
- (2) end of season

B. Award distribution -

(1) **Event awards** – Awards may include without limitation free Goodyear racing tires, free brake pads, etc. based on random drawings, usually held at Driver's and chief mechanic meetings. To be eligible for free prizes, the Driver must be registered in Star Mazda Championship Presented by Goodyear championship, entered in that Event and not have previously won that free item. Drivers must be present during the drawing to win.

(2) **Star Mazda Championship presented by Goodyear -**

<u>Position</u>	<u>Prize</u>	<u>Position</u>	<u>Prize</u>
1 st\$100,000	9 th\$22,500
2 nd\$70,000	10 th\$20,000
3 rd\$50,000	11 th\$18,000
4 th\$40,000	12 th\$16,000
5 th\$35,000	13 th\$14,000
6 th\$30,000	14 th\$12,000
7 th\$27,000	15 th\$10,000
8 th\$25,000		

(3) EXPERT Class championship -

<u>Position</u>	<u>Prize</u>
1 st\$15,000
2 nd\$10,000
3 rd\$5,000

(4) Team Championship -

<u>Position</u>	<u>Prize</u>
1 st\$15,000
2 nd\$10,000
3 rd\$5,000

(5) Awards of Merit - STAR will present Awards of Merit at their discretion and may add awards at any time. The name and criteria of the Awards of Merit are listed but not limited to those below:

(a) ‘Rookie of the Year’, \$10,000 – A bonus awarded to the Rookie Driver with the most championship points at the year end.

(b) ‘BBS Hard Charger Award’, estimated value at \$5,000 - Awarded to the Driver that improves the most positions from start to finish over the entire season. That Driver is awarded a custom-made coffee table made from a polished BBS wheel and etched glass top, plus a set of four BBS racing or BBS road car wheels (valued

at \$5,000)

(c) **‘QuarterMaster Clutch Performer Award’, \$5,000** – Awarded to the Driver who accumulated the most points in the final 6 Races

(d) **‘VP Fuel Most Improved Driver’, \$5,000** – Award for the Driver displaying the most improvement over the season.

(e) **‘President’s Cup The Spirit of the Star Mazda Championship’, \$2,500** - Awarded to the person who most exemplifies the qualities and character that Star Mazda Championship Presented by Goodyear values and promotes

(f) **‘Performance Friction Crew Member of the Year’, - \$1,500** – Award given to the Team member who has done a consistently outstanding job throughout the season.

11.3 Withholding–

A. Offset – INDYCAR and STAR shall have the right to offset any amounts owed by a Member to INDYCAR, STAR, an Event Promoter or a Manufacturer or their affiliates against any awards otherwise payable to the Member or the Member’s Entrant.

B. Protest - If a protest is lodged affecting the distribution of an award, all awards and so affected shall be retained by STAR, without obligation as to interest, until the dispute is resolved.

XII. PROTESTS

12.1 Submission of Protests - A protest shall be submitted to the Race Director.

12.2 Protest – A protest includes:

A. Written Protest - A protest shall clearly state the errors claimed. Each claimed error must be stated in specific rather than general terms and must be accompanied by a written statement of the facts and grounds upon which it is based. Except in the case of penalties that may not be protested or appealed as set forth in these Rules, a Member who receives a penalty notice may file a protest pursuant to Rule XII or, if the penalty was issued by the Race Director, an appeal pursuant to Rule XIII.

B. Protest Fee - The protest fee is \$1,000 and is non-refundable. The protest fee is in addition to any monetary penalty previously assessed.

12.3 Right to Protest and Time Limits -

A. Entry – Only the Entrant submitting an Entry may protest the rejection of such Entry. The protest must be filed within 24 hours of notice of rejection of the Entry. Any Competitor who competes in any Event that is not in accordance with the published Entry form conditions waives the right to protest the non-enforcement of such conditions.

B. Entrant - Only an Entrant may protest an action of the scoring, inspections or awards of positions or an action of the Entrant or another Competitor during an Event. The protest must be lodged within 30 minutes after the official posting of results or the issuance of the penalty notice. To preserve the right to protest, the Entrant must verbally notify the Race Director of its intent to file a protest within 15 minutes after the official posting of results or the issuance of the penalty notice. If a penalty is not issued until the next business day or later after an Event, the protest must be lodged by 5 p.m. E.D.T. of the second business day following the release of the penalty notice.

C. Other Members - Except as otherwise provided in the Rules, a Driver or other Member may protest any action taken by Officials with respect to such Driver or Member. Protests of actions taken by Officials must be lodged within 30 minutes after the official posting of results or the issuance of the penalty notice. To preserve the right to protest, the Driver or other Member must verbally notify the Race Director of the Driver's/Member's intent to file a protest within 15 minutes after the official posting of results or the issuance of the penalty notice. If a penalty is not issued until the next business day or later after an Event, the protest must be lodged by 5 p.m. E.D.T. of the second business day following the release of the penalty notice.

D. Any Member who is entitled to protest and/or appeal an issue being protested and/or appealed by another Member is an interested party who has the right to be heard but whose own interest will not be controlled by the protest or appeal decision unless Officials chooses to provide relief at its discretion. Likewise, a Member whose interest may be affected by a protest and/or appeal by another Member has a right to be heard at a protest and/or appeal hearing.

E. Decisions Not Subject to Protest or Appeal -

Members recognize the need for Officials to make decisions that require judgment and the exercise of discretion, often instantaneously with Events as they are occurring. Members recognize that there is no system of instant replay during or after an Event. The exercise of judgment by Officials during an Event, and any other matters which may be designated as not subject to protest or appeal under these Rules, may not be protested or appealed and the decision of Officials is final and binding. Examples of this exercise of judgment include but are not limited to the following:

(1) Whether to declare a practice session completed or to modify a practice session; whether a Car has participated sufficiently to be deemed a non-starting Car.

(2) Whether to declare or end a yellow condition; whether, when and where to move a Car.

(3) Whether a Car must forfeit its guaranteed qualifications attempt; whether to add warm up laps to a qualifications attempt, interrupt a qualifications attempt or to extend qualifications.

(4) Whether a Car returned to its original starting grid position prior to the conclusion of the parade lap or to reorder the Car at the rear of the starting grid; whether a Driver improved the Driver's position prior to crossing the start/finish line at the start of a Race; whether a Car advanced or maintained its position relative to other Cars due to an off Track excursion; whether a Car retiring from a Race in pit lane shall be credited with completing a lap.

(5) Whether a Car was properly positioned upon the declaration of a yellow condition; whether the Safety Car signaled a Driver to pass during a yellow condition, whether a proper passing signal was given

during a yellow condition, whether the Safety Car or another Car was improperly passed during a yellow condition or whether a Car was properly positioned as it crossed the point designated as the end of the pit lanes.

(6) Whether the Car leading the Race or any other Car fails to restart or pace the Race as directed by Officials.

(7) Whether to declare or end a green condition during a Race.

(8) Whether to declare a black flag, disqualification, or other non-monetary penalty; whether to reposition a Car in a posting to reflect the failure to fulfill a black flag or other penalty; whether a Member attempted to or engaged in unsportsmanlike behavior, blocking or team tactics.

(9) Whether a Car followed proper procedures entering pit lane, participating in a pit stop, or exiting pit lane; whether a Driver passed the Driver's pit by more than one pit and was pushed back to the pit.

(10) Whether a Car successfully completed technical inspection; whether a Car involved in a crash prior to the Race may be repaired or must be replaced by a backup Car; whether a Car is in a hazardous condition or was involved in contact such that it will not be permitted to continue in an Event, or whether to approve technical and structural changes during a Race.

(11) Whether to declare a red condition during a Race, to declare a Car was involved in a crash during or subsequent to the red condition, to restart a Race stopped by the declaration of the red condition, or to rule a Race complete.

(12) Whether a Car caused an avoidable yellow or red condition.

(13) Whether to declare a Race completed, canceled, postponed, temporarily stopped or delayed.

Notwithstanding the foregoing, Officials may review a decision that is non-protetable as they deem appropriate. Review of a non-protetable decision does not render it protetable or appealable.

The Race Director may decline to accept a protest, even if the matter were otherwise protetable, if he determines that the alleged Rule violation is so insubstantial as to not provide a Member with a significant competitive advantage over other Members.

12.4 Jurisdiction - The Race Director shall have the exclusive jurisdiction to resolve all protests. Notwithstanding the foregoing, the Race Director shall have the right, in his discretion, to select an individual or individuals to resolve a protest with all of the powers and responsibilities of the Race Director set forth in this Rule XII. The jurisdiction of the Race Director is limited to those matters and issues submitted to the Race Director by the protestant. The decision which is the subject of the protest shall not be stayed pending the protest unless otherwise determined by the Race Director and upon such terms as the Race Director deems appropriate.

12.5 Advisory Committee – While the Race Director has no obligation to use an advisory committee, the Race Director may choose to use an advisory committee selected by the Race Director to assist in making a determination on a protest. The members of the committee shall consist of individuals involved with automobile racing, but who do not have a financial interest in the outcome of the protest. The advisory committee may make a recommendation as to the disposition of the protest, but any determination is in the discretion of the Race Director.

12.6 Hearing of the Protest – The Race Director may cause an investigation to be made into the matters surrounding the protest and shall convene a hearing within 14 days of receipt of the protest notice unless the hearing date is extended by the mutual agreement of the Race Director and the protestant. The protestant and any Member requesting an opportunity to participate and who the Race Director determines has a material interest in the protest (as described in Rule 13.4) shall be entitled to be heard and given an opportunity to call witnesses and shall be given adequate notice of the hearing. If a Member is called as a witness and fails to appear, INDYCAR may revoke the Member's membership or otherwise penalize the Member. The hearing shall be informal and shall be confined to the errors claimed in the protest and evidence relevant to those errors. The decision of the Race Director on the protest shall be final and binding on all Members, subject only to the right to appeal the decision under the Rules. Any award withheld as a result of a protest shall continue to be withheld until the protest has been finally adjudicated in accordance with the Rules.

12.7 Compliance with Procedure - Any protest failing to comply with the Rules may be denied and disregarded. Any error not specifically raised in the protest shall be deemed to have been waived.

XIII.

APPEALS

13.1 Initiation of an Appeal - To the extent permitted under the Rules, any Member may appeal a determination by the Race Director on the imposition of a penalty or on a protest. An appeal may be initiated by submitting the following to the Appeal Official by 5 p.m. E.D.T. of the second business day following the release of the penalty notice or protest decision:

A. Written Notice of Appeal - The notice of appeal must contain reference to the specific action by Officials from which an appeal is taken, the date of the occurrence, the reasons for the appeal, and specific reference to any Rules allegedly violated and the relief requested. The notice of appeal must be accompanied by copies of all written documents pertaining to the appeal, such as protests, responses, rulings, declarations, etc. The notice of appeal must clearly and explicitly state the basis of the appeal.

B. Appeal Fee - The appeal fee is \$7,500 and is non-refundable. The appeal fee is in addition to the protest fee and any monetary penalty previously assessed.

C. Violation Involving Multiple Members – Where more than one Member of the same Entrant is involved in the same violation of the Rules, the Appeal Official may at his or her discretion allow one written notice of appeal and appeal fee to cover all such Members. In order to not lose any rights an Entrant may have, a request under this Rule 13.1(C) should be made and approved by the Appeal Official within the two day period.

13.2 Jurisdiction - The Appeal Official shall have the exclusive jurisdiction to resolve all appeals. Notwithstanding the foregoing, the Appeal Official shall have the right, in his or

her discretion, to select an individual or individuals to resolve an appeal with all of the powers and responsibilities of the Appeal Official set forth in this Rule XIII. The jurisdiction of the Appeal Official is limited to those matters and issues submitted to the Appeal Official by the appellant. The decision which is the subject of the appeal shall not be stayed pending the appeal unless otherwise determined by the Appeal Official and upon such terms as the Appeal Official deems appropriate.

13.3 Advisory Committee – While the Appeal Official has no obligation to use an advisory committee, the Appeal Official may choose to use an advisory committee selected by the Appeal Official to assist in making a determination on an appeal. The members of the committee shall consist of individuals involved with automobile racing, but who do not have a financial interest in the outcome of the appeal. The advisory committee may make a recommendation as to the disposition of the appeal, but any determination is in the discretion of the Appeal Official.

13.4 Hearing of the Appeal - The Appeal Official may cause an investigation to be made into the matters surrounding the appeal and shall convene a hearing within 30 days of receipt of the appeal unless the hearing date is extended by the mutual agreement of the Appeal Official and the appellant. The appellant and any Members requesting an opportunity to participate in the proceeding and which the Appeal Official determines to have a material interest in the proceeding shall be given notice of the hearing and shall be entitled to be heard and call witnesses. The effect on championship point standings does not constitute a “material interest”. In the Appeal Official’s discretion, he or she may permit a Member to be represented by counsel.

13.5 Conduct of the Appeal Hearing - The hearing will be conducted according to the following procedures:

- A. The hearing is not open to the public and admittance to the hearing is at the discretion of the Appeal Official. The

Appeal Official shall conduct the hearing in an informal manner.

B. The Appeal Official shall identify the parties and other necessary participants in the proceedings. The Appeal Official may summon any Member to testify at the hearing.

C. The Appeal Official may exclude from the hearing room or from further participation in the proceedings any individual who engages in improper conduct in relation to the hearing.

D. The Appeal Official shall not be limited to the technical common law rules of evidence required in judicial proceedings but shall be satisfied the evidence submitted is of a type on which the Appeal Official can rely. The Appeal Official may exclude irrelevant, immaterial or unduly repetitious evidence.

E. All parties to the proceedings shall be permitted to present and cross-examine witnesses and to submit evidence, both oral and documentary. The burden of proof shall remain at all times on the appellant.

F. The Appeal Official shall consider only evidence introduced during the hearing and there shall be no transcript of the hearing unless the Appeal Official determines otherwise.

G. The Appeal Official shall not consider matters not assigned as error in the original protest or matters outside the scope of the submission by the appellant.

13.6 Structure of the Appeal Hearing - The Appeal Official shall conduct the hearing in the following manner. Prior to opening statements or the submission of proof by the appellant, the Appeal Official may request that the Race Director submit an explanation of the basis of his decision.

A. Opening Statements - The parties to the proceedings will be permitted to make opening statements, with the appellant making the first opening statement. Each party shall state the issue(s) before the Appeal Official and a brief summary of the position of the party with respect to such issue(s).

B. Order of Proof - The evidence shall be received by the Appeal Official in the following order:

(1) The appellant shall first submit and present evidence in support of the appeal. Upon the completion of direct examination, each witness shall be subject to cross-examination by the other parties and by the Appeal Official.

(2) The Race Director and the other parties shall then be permitted to present evidence, and any witnesses presented shall be subject to cross-examination by the appellant, by other parties, and by the Appeal Official.

C. Closing Arguments - Upon completion of the evidentiary portion of the hearing, all parties, beginning with the appellant, may make closing arguments.

13.7 Powers of the Appeal Official - The Appeal Official shall have the following powers:

A. To call, examine and cross-examine witnesses; to receive and rule upon relevant evidence; to regulate the course of the hearing and, if appropriate or necessary, to exclude individuals or counsel for contemptuous conduct and to strike and disregard all testimony of witnesses refusing to answer proper questions; to dispose of procedural requests, motions or similar matters; to dismiss appeals or portions thereof; to require a party at any time to state its position concerning any issue in the appeal or

its theory in support thereof; and to pronounce a just remedy within the Rules for the penalty, result or circumstance at issue.

B. To require the appellant to post an adequate bond to cover the costs of the appeal or any reasonable foreseeable economic harm to INDYCAR, STAR or other Members that might be caused by the appeal. If the Appeal Official requires a bond, its form and substance shall be in the discretion of the Appeal Official.

C. To order the appellant against whom a final decision is rendered to pay all costs and expenses, including attorneys' fees, incurred by INDYCAR and/or STAR and the other parties if the Appeal Official determines the appeal was frivolous.

D. To take any other action deemed appropriate for a just and expeditious conclusion of the hearing.

13.8 Determination of the Appeal - There is no deadline for the issuance of a decision by the Appeal Official. The time frame will depend upon the nature of the appeal. It is anticipated that a decision will normally be issued within 30 days.

13.9 Appeal Procedure Final - Decisions of Officials on the interpretation of the Rules, scoring of positions and penalties shall be final and binding unless such decisions and penalties may be protested and/or appealed under the Rules, are protested and appealed within the time limitations and other procedures prescribed by the Rules, and such protests or appeals are pending.

A. A Member's exclusive right to contest a decision or the Rules is within the protest and appeal procedure of INDYCAR, and any decision reached within this procedure is final and binding.

B. Any un-appealed protest decision by the Race Director or any appeal decision by the Appeal Official on these or any other matters shall be final and binding.

C. No court action of any kind may be taken by any Member.

D. By submitting a membership application and in consideration of receiving the numerous benefits available, each Member agrees to abide by the decisions of Officials and agrees that such decisions are final, non-appealable (except as provided by the Rules) and non-litigable.

E. Any Member participating in an Event waives any rights such Member may otherwise have to be a party or to take any action in court seeking legal or equitable relief against any decision or action of any kind by INDYCAR, STAR, their Officials or anyone acting on behalf of INDYCAR and/or STAR.

F. Each Member acknowledges that participation in an Event by other Entrants, Drivers and Members is in part in reliance on this waiver.

G. If a Member initiates or participates in litigation in violation of the Rules, all membership privileges shall thereupon be suspended and the Member agrees to reimburse INDYCAR, STAR, their affiliates, and other named Members for all costs of litigation including without limitation travel expenses and attorneys' fees.

13.10 Compliance With Procedures - Any appeal that fails to comply with any of the foregoing requirements may be dismissed and disregarded. Any error not specifically raised in the protest or appeal shall be deemed to have been waived.

<p style="text-align: center;">XIV TECHNICAL SPECIFICATIONS</p>

14.1 General-

A. Only Cars manufactured by STAR are eligible for competition. To be eligible for points, all Cars must be updated to current specification. Earlier specification Cars may be permitted to compete in Events, but shall not be eligible for 2011 Championship points.

B. Intent of the Rules

- (1)** It is the intention of these Rules to not permit innovation and alteration of the Cars.
- (2)** Anything not expressly permitted by these regulations and related supplements is not permitted.
- (3)** Modifications, substitutions and omissions are only permitted in these Rules or by written consent of the Competition Director.
 - (a)** Modifications are defined as “any alteration to a part or component that changes its design, material, shape, finish of a working surface, function, and/or weight from that originally designed and manufactured”.
 - (b)** Substitutions are defined as “any part or component that may be exchanged with an existing part of equal or different specifications that is directly interchangeable without modification to adjoining components”. This includes

direct exchanges of commonly available parts and reproductions.

(c) Omissions are defined as “the removal of any part or component from the Car for any reason”.

C. Tape is not permitted as a single source of attachment for any component unless pre-approved by the Competition Director.

D. Covers, other than bodywork, may only be used on a Car when the Car is in its assigned paddock space. Notwithstanding the foregoing, rain covers may be used when a Car is exposed to inclement weather conditions.

E. No form of heating may be used on a Car when the Car is outside its assigned paddock space.

F. Painting, polishing, plating, anodizing, or other coatings and finishes are permitted; provided they are used for cosmetic purposes only.

G. Only those areas identified in the Rules as authorized for adjustment may be changed, and then only within the range of adjustment provided on the Car as delivered, or as specifically defined in the Rules.

H. Any non-compliant part(s) found during inspection on any Car will be forfeited by the Entrant without compensation and may be disposed of by Officials. It is the intent of this Rule to remove any such parts from circulation.

I. Magnesium and/or titanium may not be used for any part of the Car unless specifically listed in the Rules and specified by part number and description.

14.2 Inspections -

A. All Cars, parts, equipment and items must successfully complete technical inspection to be eligible for an Event. Officials may inspect all Cars, parts, equipment and items for conformity with the Rules at any time for any reason. Officials in their discretion shall determine what constitutes technical inspection, which may vary by Car, equipment and Event.

B. Completion of technical inspection does not guarantee against disqualification or other penalty if any violation is discovered during any subsequent inspection.

C. Officials may impound or confiscate a Car, part, equipment, item or data associated with a Car, a Driver, or an Entrant. Return of a Car, part, equipment, item or data by Officials does not mean that it complies with the Rules.

D. Officials may examine any Car involved in a crash and determine if it is unsuitable for further participation, and all Members shall cooperate in the preparation of damage reports, photographs, videotaping and impact recording analysis.

E. Any Entrant refusing to allow the Entrant's Car to be inspected or to follow the prescribed inspection procedures may be penalized.

F. STAR and/or INDYCAR are not responsible for payment, reimbursement, damage or loss to any Member as result of inspection procedures, impounding or confiscation.

G. The original of all required chassis-repair forms must be submitted to Officials for approval prior to the Car participating in the next Event. Repairs may only be made by STAR-approved repair stations.

H. After a crash during a Test or Event, an Entrant must present the following items to Officials:

- (1) Driver's Helmet
- (2) Driver's Head Restraint System
- (3) Driver's Seat
- (4) Chassis Headrest
- (5) Steering Wheel

Officials will inspect the items. At the discretion of Officials, any item found unsuitable for use must be repaired, re-certified or replaced by the Entrant at the Entrant's cost prior to use.

14.3 Car and Driver Weight-

- A.** The overall minimum weight of the Car including fuel, lubricants, coolants and Driver is 1335lbs.
- B.** Ballasting is permitted. Ballast shall be securely mounted to the tub.
- C.** Aluminum under trays (P/N 030-522) may be replaced with steel replicas (030-554) or multiple under trays may be fitted for ballast.

14.4 Chassis -

A. Timing Transponder –

- (1) Each Car must be equipped with a functioning AMB Tran-X 260 transponder that is registered with Officials.
- (2) The transponder must be mounted on the Drivers Left Rear Wing Support Plate (P/N 110-624) using the holes provided. (**see illustration**).



B. On Board Fire Equipment –All Cars must have an on-board fire extinguisher system with an approved extinguishing material that is in accordance with the FIA Sporting CODE, Appendix J, Article 258A.15.1, or equivalent. The trigger must be marked with a red circle with the letter "E" and be operable by the Driver and also from outside the Car. Outlets must be directed to the Driver, engine and fuel compartments. All plumbed-in extinguisher systems must be in the 'ARMED' position at all times during an Event.

C. Mirrors –

- (1) Two external rear-view mirrors must be installed. The minimum dimension of each external mirror is 55 cm².

(2) If a mirror assembly and/or glass comes off of a Car during an Event, the Car shall not be permitted to continue in the Event until the mirror assembly and/or glass has been repaired or replaced and approved by an Official.

D. Bodywork and Crash Structures-

(1) Crash Structures

(a) Nose Box-

- (i) The Nose Box (P/N 110-501 or 110-601) must be securely installed at all times while the Car is on Track.
- (ii) The mating surfaces between the front of the tub and the rear of the nose shall not have a gap larger than 2mm between them.
- (iii) Only the two piece upper nose bracket is permitted:

(1) Upper Nose Mount-Nose Side (P/N 030-565)

(2) Upper Nose Mount-Tub Side (P/N 030-566)

(b) Attenuator -The Rear Crash Attenuator (P/N 030-559) is required at all times while the Car is on Track.

(c) Tub (P/N 030-501) -

- (i) A 1" Radius semi-circle may be cut in the thin lip of the tub behind the steering wheel to accommodate the installation of dash displays.
- (ii) Holes no larger than .1875 inches may be drilled in the inner skin of the

tub cockpit to facilitate secure attachment of optional allowed parts via rivet or threaded insert. Examples include radio boxes, data sensors and ballast. Holes to the outer skin may only be drilled in areas contained by the side pods, nose, shock cover or front splitter to facilitate secure attachment of optional parts via rivet or threaded insert. Exceptions are as follows and must be approved by the Competition Director:

(1) Two holes no larger than .175 inches may be drilled into the outer skin on each side of the tub to accommodate ride height gauges.

(2) Holes may be drilled and filled in order to inject reinforcing material filler into the tub as a field repair to cracks in the tub until suitable permanent repairs can be made.

(2) Bodywork -

(a) Only factory original bodywork is permitted. Minor repairs are acceptable.

(b) Trimming fiberglass away from the right side pod to facilitate cooling is permitted. Any material may be removed below the shoulder in the area of negative air pressure. The forward limit of any such trimming shall be a vertical line drawn above the location of the third factory provided fastener that joins the upper and

lower side pod halves (counted from the front). Material being removed from the top or vertical side shoulder surface is not permitted. All modifications must be approved by the Competition Director.

(c) No modification to the body external dimensions or contour is permitted. No openings may be added or reshaped except as provided herein:

- (i) Side pod intake ducts may be reduced or blocked in any manner along or rearward of the original plane of the radiator screen.
- (ii) Protective screens may be added or deleted inside the side pods, but may not extend outside beyond the original screen locations.
- (iii) The shape of the suspension pushrod cutout may be enlarged on the damper cover to accept the updated rocker package.
- (iv) Holes may be drilled in the bodywork to accommodate the following:
 - (1) Video camera.
 - (2) Radio antenna.
 - (3) Body fasteners.
 - (4) Data acquisition hardware.
 - (5) Jumper battery plug.
 - (6) Timing beacon.

E. Cockpit -

(1) The cockpit surround (P/N 110-505 or 110-633) shall be in place during safety/ technical and at all times the Car is on Track.

(2) Minor changes in the cockpit configuration and controls in order accommodate Driver comfort and operation of the Car controls is permitted. Examples of authorized changes include: shift knobs, padding, foot pedals, seat, headrest, switches and steering wheel.

F. Windscreen - A cockpit windscreen may be added, provided it does not exceed 18 square inches of the total surface area, does not stand more than 3 inches proud of the cockpit opening, is constructed from flat stock with no compound curves.

G. Seating System

(1) Each seat shall be manufactured for a specific Driver.

(2) All seats shall be inspected by Officials before use and are subject to re-inspection by Officials at any time. Officials may require a seat to be replaced.

(3) The Driver's seat shall conform to the Driver's anatomy and be constructed of a material that will permit support and energy-attenuation both laterally and rearward. This material shall fill as much of the cockpit under and to the side of the Driver as possible. The seating system shall be in place when the Car is inspected.

(4) **Seat Belts** - An approved seat belt with a quick-release mechanism shall be used. Both the fastening design and condition of the belt is subject to inspection by Officials. Life of the belts in use shall

not exceed 2 years and must be date-stamped by the manufacturer. HANS® specific double-shoulder belts are permitted, provided the belts are mounted and used according to manufacturer specifications.

(a) Seat belts shall be worn in such a manner that they are tight and pass around the pelvis at a point below the anterior superior iliac spines.

(b) Seat belts shall not pass over the sides of the seat. They shall come through the seat at the bottom on each side thereby wrapping and holding the pelvis over the greatest possible area.

(c) 6-point (crotch) belts shall be connected to the main belt quick-release mechanism and securely attached to the chassis.

(d) Seat belts which have had to withstand a crash in excess of 50 Gs shall be replaced.

(5) Shoulder Harness - Double over-the-shoulder straps shall be used. Both the fastening design and condition of the straps is subject to inspection by Officials. Life of the straps in use shall not exceed 2 years and shall be date-stamped by the manufacturer. Shoulder straps shall be attached directly to a strong structural member of the chassis close behind the Driver's head and neck. They shall be attached in a line approximately 90 degrees to the seat back and be approximately level with the top of the Driver's shoulders.

(6) Roll Hoop - The top of the Driver's helmet shall be below an imaginary line drawn between the top of the roll hoop and the top of the dash bulkhead rollover block. The minimum clearance between the Driver's helmet and the imaginary line is 2 inches.

H. Car Cameras - An onboard camera system may be installed.

I. Heat Shielding - Heat shielding may only be applied to the following locations. Installation of additional panels in order to apply heat shielding is not permitted.

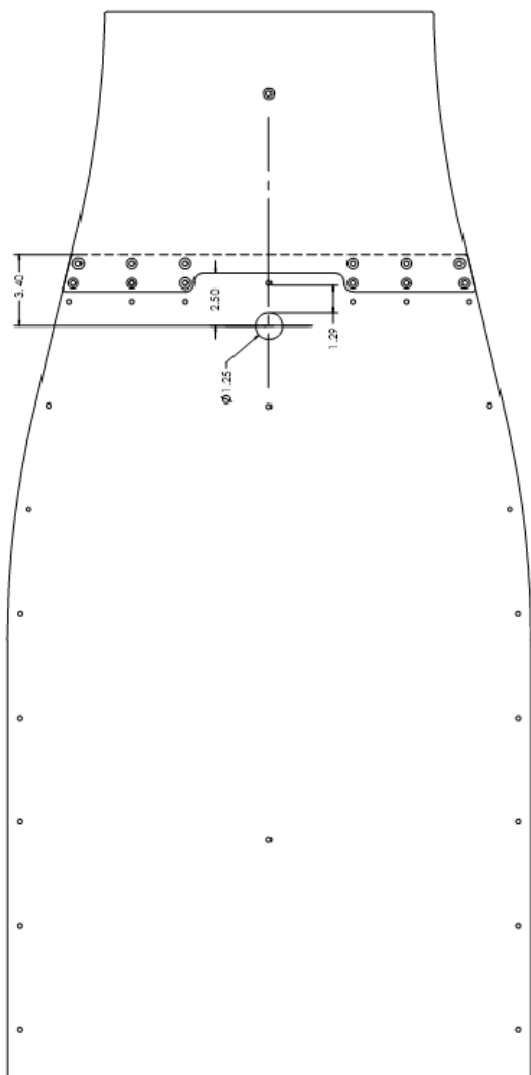
- (1) Engine Frame P/N 030-517
- (2) Heat Shield P/N 050-537
- (3) APV Actuator P/N 050-557 or 050-620
- (4) Radiator P/N 100-501
- (5) PFM Fuel Lines or equivalent P/N 070-513- 514
- (6) Chassis P/N 030-501
- (7) Gear Change Cable 060-520 or P/N 060-687
- (8) Throttle cable P/N 050-501 or 050-596
- (9) Engine cover P/N 110-508 or 110-595
- (10) RH Lower Side Pod P/N 110-527
- (11) RH Upper Side Pod P/N 110-529 or 110-594
- (12) RH Lower A-arm P/N 020-512
- (13) RR Brake Line P/N 040-526
- (14) Header Tank P/N 100-510
- (15) Fuel Cell Cover P/N 070-503
- (16) Universal Pushrod right rear only P/N 000-581
- (17) Rear Upper A-arm right side only P/N 020-525
- (18) Rear Damper Remote reservoir
- (19) Air box (bottom only, external)

J. Floors/Skids

(1) All Cars require inspection holes in the metal and wood floors (**see illustration**). The inspection holes in the wood must be 1.25 inches in diameter. The holes in the metal sheet must be 1.00 inches in diameter. Locations are on the same centers. The outer profile of both the front and rear wood floors must remain intact regardless of thickness. If metal can be observed in any area other than the inspection holes, the floor will not be approved.

(2) The area behind the skid plates on the rear floor may be removed to form 'u' shaped slots surrounding the area of the skids.

(3) Rear skids P/N 030-564 beneath the adapter housing may be omitted.



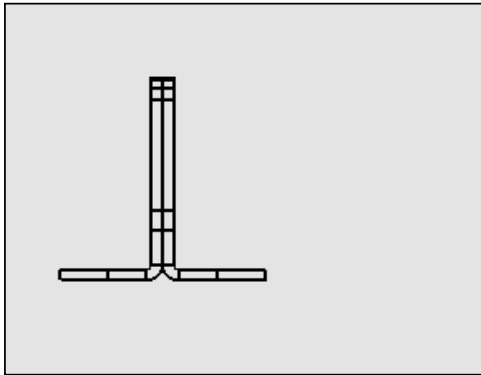
14.5 Aerodynamics -

A. Front and Rear Wing Assemblies - The following part numbers are to be considered the current aerodynamic kit. Gurneys are optional.

(1) **Front** –The front aero kit (P/N 110-602) consists of the following parts, listed Gurneys are optional:

- (a) 110-603 Front Wing Main Plane
- (b) 110-604 Front Flap LH
- (c) 110-605 Front Flap RH
- (d) 110-606 Front Wing (outer) End Fence LH
- (e) 110-607 Front Wing (outer) End Fence RH
- (f) 110- 608 Front Flap (inner) End Fence LH
- (g) 110-609 Front Flap (inner) End Fence RH
- (h) 110-610 Front Flap Bracket LH x2 (see illustration for mounting)
- (i) 110-611 Front Flap Bracket RH x2 (see illustration for mounting)
- (j) 110-612 Front Flap Gurney LH
- (k) 110-612 Front Flap Gurney RH
- (l) 110-622 Front Wing Down Plate LH
- (m) 110-623 Front Wing Down Plate RH

Required mounting for P/N 110-610 and P/N 110-611



(2) **Rear-** The rear aero kit (P/N 110-614) consists of the following parts, listed Gurneys are optional:

- (a) 110-615 Rear Lower Main Plane
- (b) 110-616 Rear Wing Upper Front Element
- (c) 110-617 Rear Wing Flap
- (d) 110-618 Rear Wing End Plate LH
- (e) 110-619 Rear Wing End Plate RH
- (f) 110-620 Rear Wing Aero Hardware Kit
- (g) 110-624 Rear Wing Down Plate LH
- (h) 110-625 Rear Wing Down Plate RH
- (i) 110-626 Lower Rear Wing Gurney

B. Gurneys - Gurneys are defined as follows:

(1) **Front-** The rear vertical face of all Gurneys shall be positioned on the trailing edge of the Front Flap. The upper edge of the Gurney shall maintain a straight edge to within +/- .100 inches. The maximum height of the Gurney shall not be more than .750 inches measuring from the wing surface to the top of the Gurney.

(2) **Rear-** The rear vertical face of the rear Gurney shall be positioned on the trailing edge of the rear main plane. Rear Gurneys shall maintain a thickness of 0.062 inches. The upper edge of the Gurney shall maintain a straight edge to within +/- .100 inches. The maximum height of the Gurney shall not be more than .750 inches measuring from the wing surface to the top of the Gurney.

D. Adjustments-

(1) **Front-** The angle of attack for the front wing main plane is fixed. Front wing flaps may be adjusted within the range provided. Front wing end plates shall not be modified.

(2)**Rear-** The rear main plane and upper forward element are fixed. The rear wing flap may be adjusted, provided the trailing edge does not stand proud of the endplate.

E. Diffuser -

(1) The diffuser center brackets (P/N 110-543) shall be installed at all times and shall use the bottom bolt on the FTR rear bearing carrier. Prior to qualifying and Race, the brackets shall be installed, as delivered condition.

(2) Holes may be cut in the diffuser for the sole purpose of accommodating pass through of ride height gauges.

14.6 Suspension - Parts must be original STAR, unmodified and as delivered.

A. Springs - Springs must be STAR issued and approved. Only the following spring rate/part numbers may be used. Any four springs may be used in any

position on the car.

- (1) 400 (P/N 000-584)
- (2) 500 (P/N 000-585)
- (3) 600 (P/N 000-537)
- (4) 700 (P/N 000-538)
- (5) 800 (P/N 000-539)
- (6) 900 (P/N 000-540)
- (7) 1000 (P/N 000-541)

B. Front and Rear Dampers/Shock absorbers –

(1) Ohlins TTX36, 2 or 3 way adjustable, serviced, serial numbered, and sealed by STAR only. Shock absorbers shall be installed in the positions supplied. Adjustment is free, within the range provided. Shock absorbers shall only be serviced through STAR. Service includes changing of internal fluids and/or components. TTX36 damper canister pressure is not open for adjustment. Any TTX36 damper whose canister pressure is above or below the specified amount shall be considered out of spec.

- (a) Front 2-way P/N 000-577
- (b) Front 3-way P/N 000-586
- (c) Rear 2-way P/N 020-543
- (d) Rear 3-way P/N 020-551

(2) The use of one spring abutment bearing per spring is permitted (P/N 000-562).

(3) **Bump Rubbers and Packers** – Bump rubbers and packers are not permitted.

C. Adjustments- Static adjustments are permitted only within the range of adjustment provided (ride height, caster, camber, toe in/out, bump steer). It is permitted to disconnect the sway bars (anti roll bars) and remove any parts necessary to safely accomplish this.

D. Bearings-

(1) Manufacture and construction of spherical bearings and rod ends is unrestricted, provided suspension geometry is not altered beyond original adjustment range. A minimum thread engagement of 1.5 times the rod end shank diameter shall be maintained inside suspension links at all times.

(2) The only authorized wheel bearings are as follows:

- (a) P/N 140-501 NTN SNR
- (b) P/N 140-517 SKF

(3) Repacking of the bearing grease is permitted, and grease brand and type are free. No other alterations shall be made to any of the bearing or bearing assembly parts.

E. Control Arms - Each slip joint on all front control arms shall be effectively locked with threaded fasteners.

F. Track Rods -Track rods with turnbuckles (P/N 010-528), (P/N 010-529) and (P/N 010-533) are permitted and may be used within the range of adjustment provided.

G. Pushrods - Front pushrods shall measure between 20.25 inches overall and 21.1875 inches overall. Any length may be used, but both sides shall be of the same length except under the following conditions:

(1) Unequal length front pushrods may be used on Oval Events provided the length of each pushrod is within the permitted range of adjustment provided.

(2) Pushrods with turnbuckles P/N 000-581, 000-579, 000-580 are permitted and may be used within the range of adjustment provided.

H. Front Anti Roll Bar/Blade - Updated sway bar blade (P/N 000-510) shall be used at all times, with either the 19mm front sway bar (P/N 000-551) or the 20.5mm sway bar (P/N 000-507) For Oval Events, Officials shall require the 20.5mm front sway bar, unmodified.

I. Uprights - No blueprinting of the uprights is permitted. The use of shims, washers or spacers between the mating faces of the hub (P/N 000-521) and either Front tooth wheel (P/N 000-543) or the outer drive cup (P/N 060-531) is not permitted. Rear uprights shall use the 12 point Mil spec hub bolts (P/N 060-652) and 12 point Mil spec nuts (P/N 060-653).

J. Pickup Points -

(1) Only one suspension pickup point has an optional location. The rear lower control arm may be located in either of the forward, inboard mounting points provided on the transmission adaptor case.

(2) The spacer (P/N 000-549) that resides between the tub and the lower pin (P/N 00-529) shall be in place at all times.

(3) Roll centers and suspension geometry are only adjustable via the rod ends attached to the control arms. Any attempt to alter any pickup location using shims, spacers, washers or any other method is not permitted.

(4) The lower rear wishbone clevis on the LH rearward leg (P/N 030-505) may be modified for the sole purpose of facilitating removal of the gearbox side cover.

14.7 Clutch, Brakes and Hydraulics:

(1) The Clutch assembly and components shall only be replaced with the STAR approved type, size and brand.

(a) (060-669) 2 Disc Cover with AAA spring (white).

(b) (060-694) Clutch pack 2 disc gear drive premium friction.

(2) Brake calipers and rotors shall only be replaced with STAR approved type, size and brand.

(a) Brake calipers shall be used in their intended locations.

(i) LF P/N 040-501

(ii) RF P/N 040-502

(iii) LR P/N 040-506

(iv) RR P/N 040-507

(b) Rear calipers shall be installed in the forward location on the upright.

(3) Approved rotors are as follows:

(a) LH Either Alcon (P/N 040-503) or PFC (P/N 040-552) Performance Friction # 278.18.0041.51

(b) RH Either Alcon (P/N 040-504) or PFC (P/N 040-553) Performance Friction # 278.18.0041.52

(c) Rotors may be mixed front to rear

(d) Rotor bobbins/bolts shall not be switched between Alcon or PFC.

(4) Brake pads shall only be STAR approved type, shape, brand, and material and shall be Performance Friction PFC05 (P/N 040-556) with STAR markings.

(5) Brake and clutch master cylinder sizes are unrestricted, provided the brand and type remain as approved by STAR. Alternative brands and models of clutch and brake master cylinders may be approved by the Competition Director.

(6) Minimum brake rotor thickness is 0.679 inches. Modification of the brake rotor is not permitted.

(7) Temperature bands (P/N 040-557) may be used around the minor circumference of the rotor vanes to increase brake temperature.

(8) Routing of hydraulic lines is unrestricted.

(9) Quick disconnect fittings are permitted for the clutch and brake lines.

(10) Anti-knock back springs (P/N 040-551) shall be installed inside the calipers, behind each piston. The Anti-knock back springs shall not be modified.

14.8 Wheels and Tires-

(1) Only wheels approved by Star shall be used. No modifications are permitted. Safety pin wheel nut locks are mandatory during use.

(a) Front-STAR approved BBS 9" wide x 13" diameter (P/N 000-501).

(b) Rear- STAR approved BBS 11" x 13" diameter (P/N 020-501).

(2) Officials will mark one set of dry (slick) tires for each Car, before, during or after official qualifying during impound. At least 3 of the same four marked tires, used in qualifying shall then be used by that Driver to start the Race. Substitution of more than one tire, outside of rain tires, shall result in loss of qualifying time. Use of the spec rain tire is “free” at any time, without penalty.

(3) Use of tire warmers or tire cooling methods other than ambient air is not permitted.

(4) Tires shall never be treated with a foreign substance.

(5) A list of required tire specifications for each Race shall be published in advance by STAR.

(6) Only the Goodyear tires specified below are to be used in Events.

- (a) Front Dry - #D4191
- (b) Rear Dry - #D4192
- (c) Front Wet - #D4286
- (d) Rear Wet - #D4287
- (e) Oval Tires TBA

(7) No pressure limiting device of any kind is allowed in the wheel/tire assembly.

(8) Only nitrogen or compressed air may be used to inflate Tires.

14.9 Fuel System -

A. Fuel Cell -

(1) Fuel cell shall be of an approved type (P/N 070-

501) meeting FIA Spec FT-3.

(2) Surfacing of the surge tank doors in order to increase the likelihood of a proper seal is permitted.

(3) Adding any foreign objects or material inside the fuel cell in an effort to displace fuel is not permitted.

B. Fuel Pressure - Fuel pressure shall be as required by the Rules.

(1) Fuel pressure shall be 56psi +/- 2 psi as measured in the fuel line before the fuel pressure regulator with the engine running below 2000rpm.

C. Fuel Lines and Routing- Fuel line lengths are free provided the lines are AN-6 size only.

(1) The plumbing sequence of major components is as follows and is not subject to alteration.

- (a) Fuel Filter (P/N 070-522)
- (b) Fuel Pump (P/N 070-507, or P/N 070-530))
- (c) Bulkhead fitting top of Fuel Cell
- (d) Secondary fuel rail
- (e) Primary fuel rail
- (f) Male dry break coupling (P/N 070-522)
- (g) Female dry break coupling (Coupling shall be installed with lanyard around the roll hoop rearward leg). (P/N 070-526)
- (h) Fuel pressure sensor. (P/N 095-145)
- (i) Fuel Pressure Regulator(P/N 070-511)
- (j) Bulkhead fitting for fuel return top of Fuel Cell

(2) Competitors may direct the fuel returning from

the pressure regulator to the fuel cell in any way they deem necessary, provided the return remains entirely within the cell.

(3) A secondary inline fuel filter may be fitted to the system at any point; however, it may not be substituted for the fuel pump filter.

(4) Two fuel pumps are permitted for use:

(a) Low Volume P/N 070-507 with filter P/N 070-522

(b) High Volume P/N 070-530 with filter P/N 070-522

(5) An external fuel dessicant device may be installed.

D. Injectors - Fuel injectors shall be of type and specification for the Mazda RX-8 Renesis engine. For the original 6 injector intake, injectors shall be installed in their specified locations as primary P/N 050-522 (Red) and secondary P/N 050-553 (Yellow). For the updated 4 injector intake, the primary injector P/N 050-617 (Green) and the secondary injector P/N 050-618 (Brown) are required and shall be installed in their original locations. Fuel injectors may be cleaned and flowed using conventional methods by any source. Disassembly, service, preparation or modification to the internal parts of the injectors is not permitted.

14.10 Engine -

A. Engine - The required engine shall be a Mazda 13B "Renesis" rotary, as delivered by STAR in either the 4 injector or 6 injector configuration. The engine shall be sealed by STAR to discourage tampering, and to increase the likelihood of consistency of engine potential. Only STAR shall authorize the servicing of engines. No

impregnating materials shall be used in any part of the Engine including but not limited to the throttle body, oil pump, upper and lower intake manifolds, VDI & SSV valve components and the APV valve barrels and gear drive. No porting, polishing, or any other surface treatment is permitted on any part of the Engine including but not limited to the throttle body, oil pump, upper and lower intake manifolds, VDI & SSV valve components and the APV Valve barrels and gear drive.

B. Engine ECU - Motec M-400 (P/N 080-515), as customized for STAR with latest Star Mazda Championship Presented by Goodyear - specific configuration and mapping is required. Specific ECU configuration shall be as designated for either the 6 injector or 4 injector system. Mismatches are not permitted and may result in severe damage to an engine.

C. Engine Timing – The ignition timing shall not be more than 20 Deg BTDC measured at or below 2000 RPM.

D. Vacuum System – For Oval Events only, any 12 volt vacuum pump may be used to maintain vacuum in the vacuum reservoir. Pump location in the left side pod is recommended. Installation shall be approved by the Competition Director.

E. Alternator – Alternator shall be unmodified, in working order at all times, with belt tension according to factory tolerance. Any method for defeating the function of the alternator is not permitted.

F. Spark Plugs – Unrestricted.

G. Air box-

(1) No material or substance of any kind may be placed/added inside the upper or lower air box.

(2) No modifications are permitted to the upper or lower air box.

(3) Only the Star specified air filter is approved for use. The K&N Filter (P/N 050-539).

(4) All air entering the Engine must pass through the air filter prior to the throttle body.

H. Oil Filter-

(1) Oil filter brand, size and type are unrestricted, provided they can be installed as substitution for the original oil filter without any modification.

(2) In-line oil filters are permitted.

(3) The 2009 version Mazda 13-B P/N 050-524S Engine is permitted and shall use P/N 050-609 oil pressure regulator.

I. Engine Oil Supply - Engine oil is unrestricted provided the viscosity of the Engine oil shall be no less than grade SAE 30 at 104 degrees Fahrenheit.

J. Exhaust

(1) The exhaust system shall be used as provided by STAR. External and internal coating for heat reduction may be used.

(2) Exhaust wrap may be used on the exhaust system.

14.11 Drive Train –

A. Gearbox - The prescribed gearbox is a Hewland FTR six-speed, sequential shift, non-limited slip differential,

with 9/31 final drive and a choice of two sets of gears.

- (1) Mixing ratios between gear sets is not permitted. Additional ratios may be authorized for certain conditions by the Rules.
- (2) Reverse shall be installed and functional.
- (3) REM and similar coatings on internal parts surfaces in the transmission is permitted. Blue printing and polishing components is permitted.
- (4) The use of Hewland FTR "L" lightweight parts is not permitted.
- (5) The use of low friction seals is not permitted. Only those seals provided by STAR or Hewland shall be allowed.
- (6) Any attempt to add a friction surface within the differential is not permitted.
- (7) The following are the only permissible updates to the gearbox per Hewland updates.
 - (a) FTR-015 Pinion Nut Revision
 - (b) Cross Shaft
 - (c) Oil holes in Diff
 - (d) Oil Galleys in Diff
 - (e) FTR-212-FD 4 Gear Diff

B. Ratios-

- (1) Road Course.
 - (a) Set "A":

1 st	2 nd	3 rd	4 th	5 th	6 th
12/29	15/30	15/25	19/27	20/25	19/21

(b) Set “B”:

1 st	2 nd	3 rd	4 th	5 th	6 th
12/29	17/30	19/27	18/22	24/26	24/24

(2) Oval:

(a) Oval Set “A”:

1 st	2 nd	3 rd	4 th	5 th	6 th
12/29	15/30	19/27	18/22	19/21	24/26

(b) Oval Set “B”:

1 st	2 nd	3 rd	4 th	5 th	6 th
12/29	15/30	15/25	19/27	20/25	18/22

14.12 Electrical and Instrumentation -

A. Wiring Harness – Any modification to the main vehicle wiring harness or the engine control unit (ECU) wiring harness must be approved by the Competition Director. Records of the details of such modification shall be maintained in the CAR logbook and STAR files. Routing of electric wires is unrestricted.

B. ECU -

(1) All ECUs shall be operated with the designated 4 or 6 injector set of parameters, or map. This shall be verified continually by Officials in their discretion. Discrepancies may result in corrective action, up to and including disqualification based on the recommendation of the Competition Director and the

approval of the Race Director.

(2) ECUs are serviceable only through the STAR. STAR shall maintain records of the history of each ECU issued to Cars.

(3) The following ECU sensors must be connected and functional such that they are recorded by the ECU. Any deliberate attempt to distort the readings of the listed sensors is not permitted.

- (a) Throttle Position (P/N 095-547)
- (b) Air box Temperature (P/N 095-527)
- (c) Air box Barometric Pressure (P/N 095-524)
- (d) Oil Temperature (P/N 095-530)
- (e) Oil Pressure (P/N 095-145)
- (f) Water Temperature (P/N 095-530)
- (g) Fuel Pressure (P/N 095-145)

(4) The 11 position variable Traction Control switch (P/N 095-538) is required for all Cars.

(5) The Lambda Sensor P/N 095-540 that is connected to and monitored by the ECU is optional but recommended.

(6) The fuel pump operation must be controlled by the ECU.

C. Rain Light- Rain lights shall be functional at all times. Rain lights shall be illuminated when Cars are on Track during wet conditions, or whenever instructed by an Official.

D. Instrumentation-

(1) Instrumentation of the Cars is generally free, with the following exceptions.

- (a) No telemetry.
- (b) No strain gauges or load cells.
- (c) No laser or ultrasonic sensors.
- (d) No infrared sensors.

(2) Brackets for data acquisition sensors may be purchased from STAR or custom fitted by the Entrants. Any bracket that requires the modification of a part in order for the sensor to operate shall be approved by the Competition Director.

E. Battery- Battery shall be securely mounted in standard, left side pod position. Size and type are unrestricted provided it is a 12 Volt rated gel cell. Car may have connections fitted for auxiliary battery. Auxiliary battery is permitted for starting the motor only, and shall not be permanently attached to the vehicle. The battery must be capable of demonstrating at least 2 engine starts without external recharge or assistance, during pre-Race technical inspection.

F. Starter Motor- An on-board starter motor and battery shall remain functional at all times, except when deactivated in an emergency by the master electrical circuit breaker

G. Circuit Breaker- All Cars shall be equipped with one master electrical circuit breaker outside the Car, on Driver's right side of the roll hoop that controls all electrical power (except electrically actuated fire systems). The circuit breaker must be clearly marked by a spark in a blue triangle.

14.13 Hardware and Fluids -

A. Fuel -

(1) Only the STAR designated VP brand Star Mazda

100 fuel shall be used.

(2) The addition of any performance-enhancing substance to the fuel, air, or fuel/air mixture is not permitted.

(3) All fuel is subject to testing at any time.

(4) Fueling is not permitted in the pit lane.

(5) All fuel containers shall have a secure cap.

(6) Local fire codes are part of the Rules.

B. Fluids-

(1) Fluids and lubricants, other than fuel, Engine oil viscosity and damper oil are unrestricted.

(2) Water, water wetter or equivalent may be added to the coolant system. Antifreeze or oil based coolants are not permitted.

(3) **Catch Tanks-** Oil catch tanks shall be fitted to the Engine and transmission breathers venting to the atmosphere in such a way as to increase the likelihood that oil will be prevented from spilling on the Track. The minimum required capacity is 1liter.

C. Hardware-

(1) Commercially available (such as McMaster-Carr, Grainger, or Bild Industries catalogues) hardware and fasteners are free, except that threaded fasteners shall be ferrous material only, minimum grade 5. Metric or US sizes and threads are permitted. Aluminum fasteners are permitted on bodywork only. A part may be considered a fastener only if it serves no other purpose than to

cause a component to maintain a fixed position.

(2) Hoses and clamps are unrestricted, provided safety is not compromised.

(3) The following parts may be drilled / tapped for the sole purpose of installation of captive nuts. Additional parts may be added to this list in the discretion of the Competition Director.

- (a) Front shock clevis 030-529
- (b) Rear shock clevis RH 030-503
- (c) Rear shock clevis LH 030-502
- (d) Front tub clevis 030-511
- (e) Rear wing flap 110-617

14.14 Pit Lane/Garage Area Fire Equipment - The Entrant shall have a fully charged 10 pound dry powder extinguisher or its equivalent in the Car's pit/garage area. A gauge shall be attached to each fire extinguisher.

14.15 Equipment – All trailer-mounted generators shall vent exhaust gasses above the top of the Entrant's transporter.